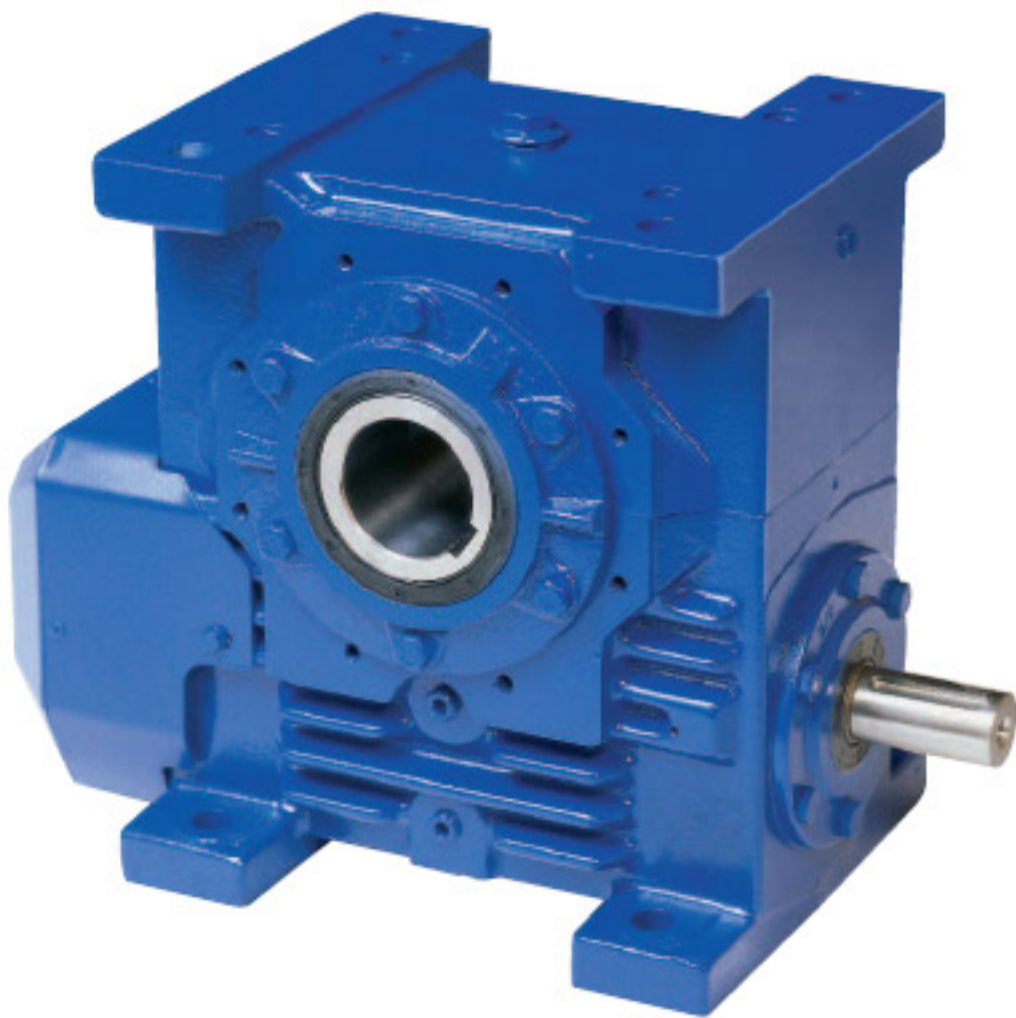


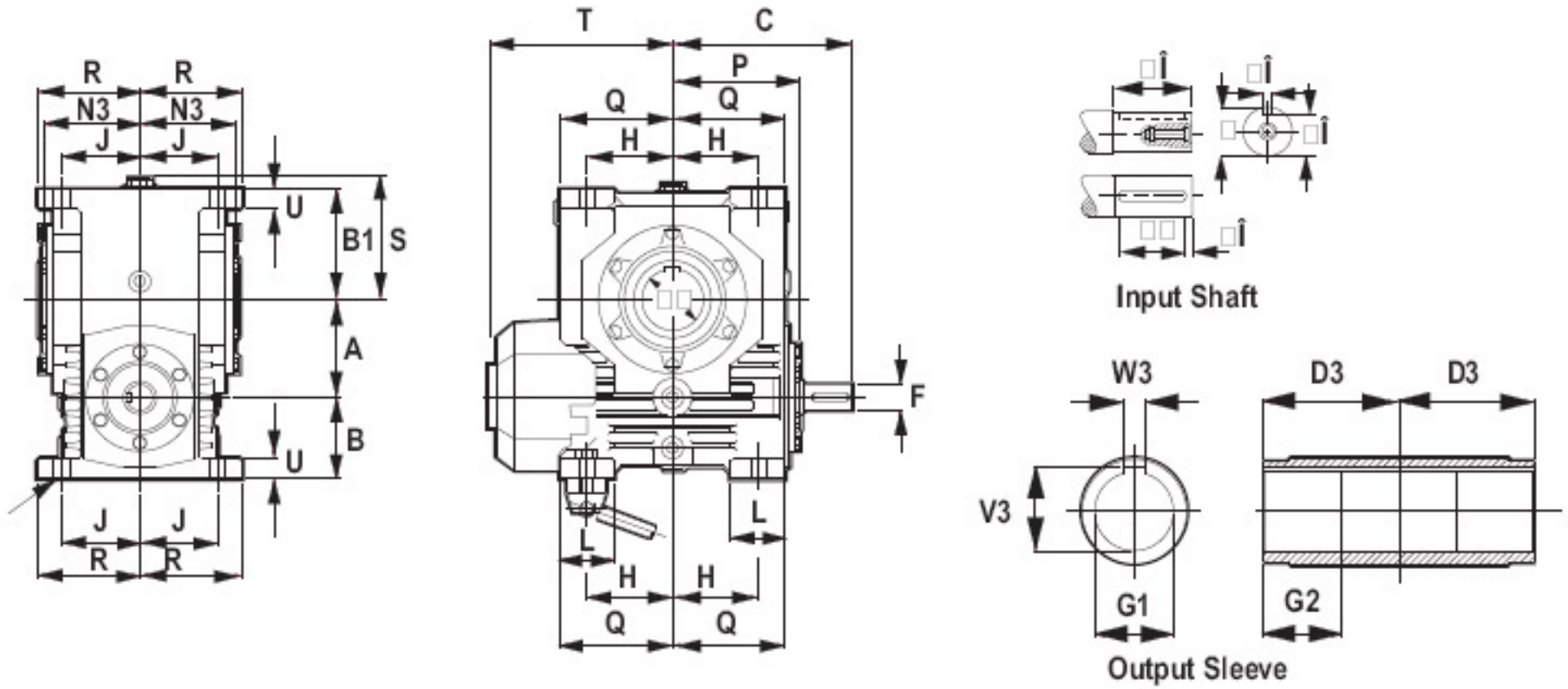
## WORM GEAR REDUCER



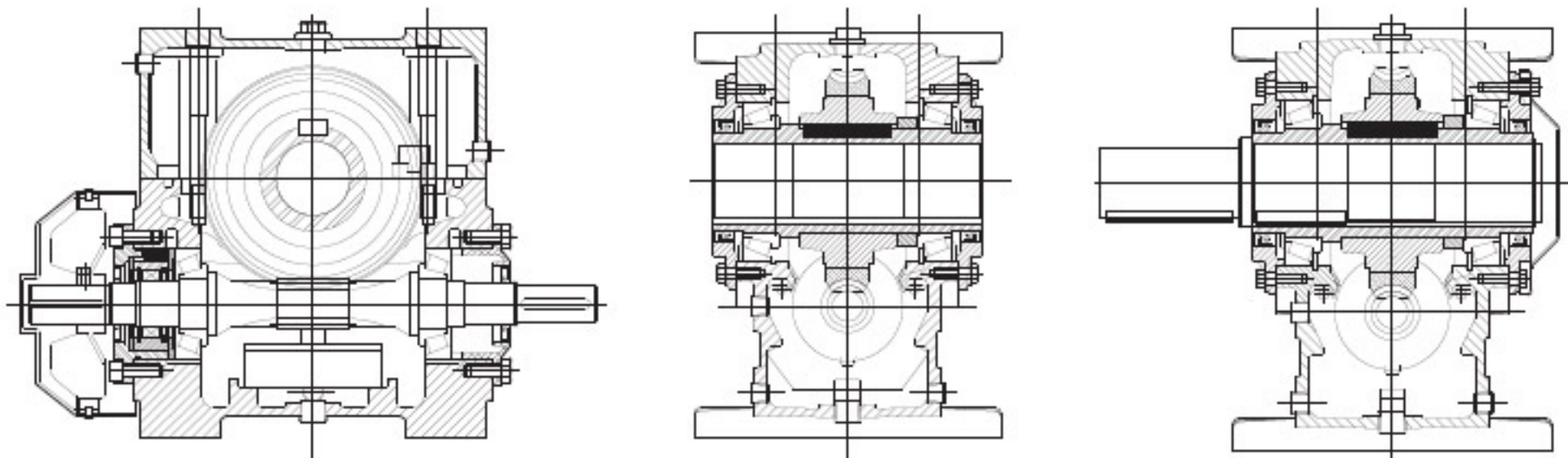
**5GW**

# 5GW... Worm Gear Reducer

## Worm Shaft Mounted



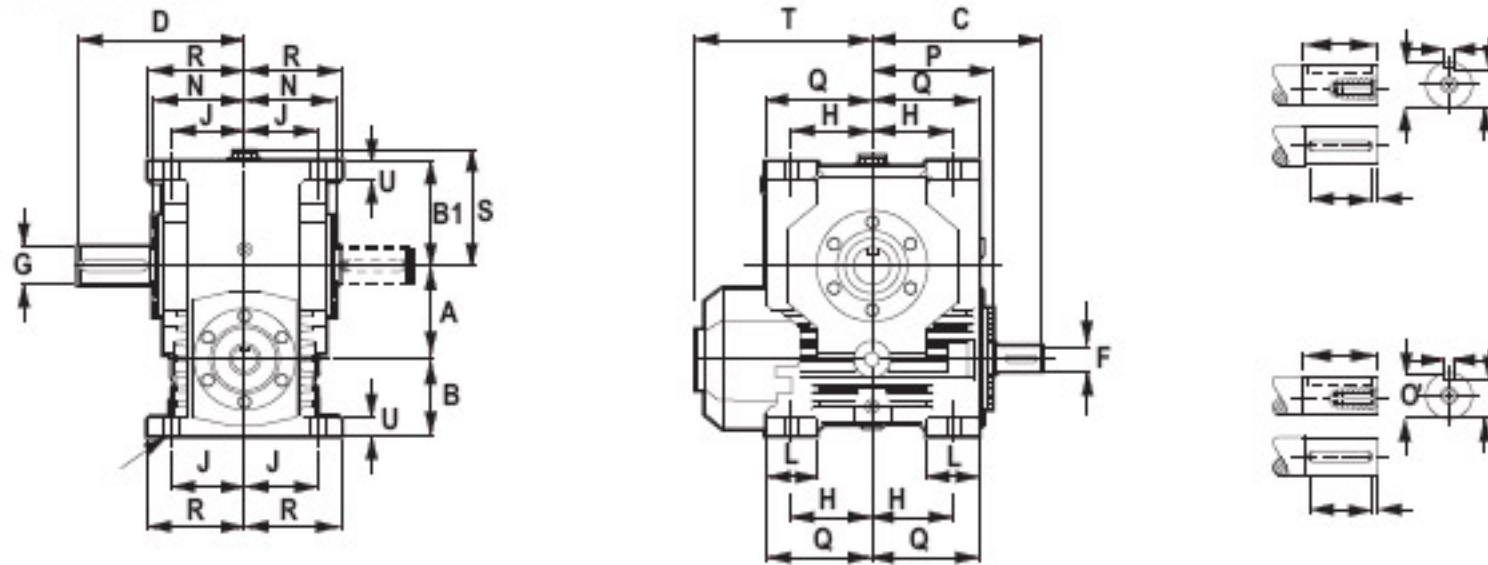
Model	A	B	B1	C	T	R	N3	N	F	E1	X2	M1	V1	W1	G1	V3	W3	H	J	Q	R	U	K	H1	J1	K1
225 WSM	57.15	70	85	142	153	75	58	4	22	50	45	-	18.5	8	30	33.3	8	52.5	52.5	76	66	14	11	52.5	52.5	11
300 WSM	76.2	102	105	155	175	100	80	5	25	50	45	M8	21	8	50	53.8	14	70	80	90	96	20	14	70	80	14
400 WSM	101.6	108	115	215	225	115	95	6	32	65	60	M12	27	10	65	69.4	18	90	80	125	100	25	18	100	50	M16
500 WSM	127	118	140	242	250	145	115	15	35	70	65	M12	30	10	70	75.1	20	110	100	150	126	30	18	120	65	M16
600 WSM	152.4	127	170	279	301	165	132	20	38	75	70	M12	33	10	75	80.1	20	133	120.5	177	151	32	23	140	75	M20
700 WSM	177.8	146	200	311	345	160	132	8	40	82	79	M16	35	12	80	85.6	22	153	133	200	170	36	23	160	75	M20
800 WSM	203.2	146	225	342	368	180	148	8	45	88	85	M16	39.5	14	90	95.6	25	171.5	133	220	170	40	27	170	80	M24
900 WSM	228.6	154	252.4	375	401	190	157	8	50	95	92	M16	44.5	14	95	100.6	25	195	141	245	172	40	27	193	90	M24
1050 WSM	266.7	172	281.3	450	475	205	180	8	60	115	110	M20	53	18	100	100.6	28	216	165	295	215	50	33	220	110	M30



All dimensions are in mm unless otherwise specified, In view of our constant endeavor to improve the quality of our products, we reserve the right to alter or change specifications without prior notice.

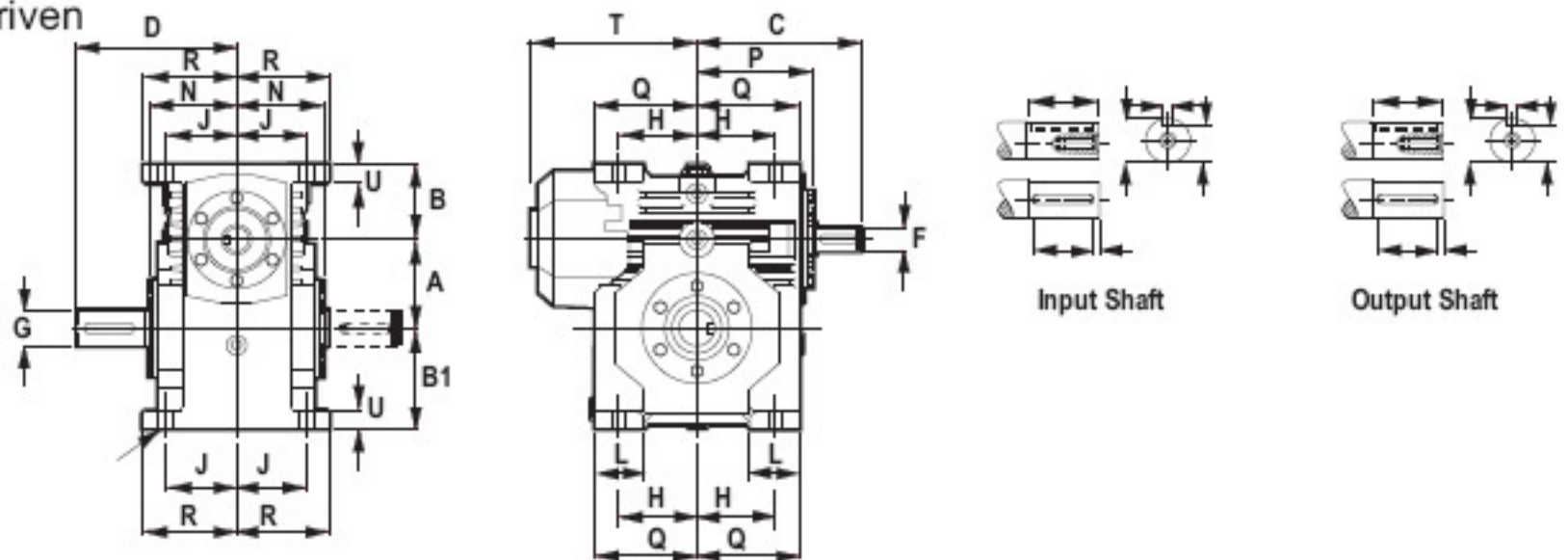
# 5GW... Worm Gear Reducer

## Worm Under Driven



Model	Q	H	R	J	U	K	A	B	B1	F	E1	X2	M1	V1	W1	C	T	G	E2	Y2	M2	V2	W2	D	N
400 WU	125	90	100	80	25	18	101.6	108	115.4	32	65	60	M12	27	10	215	225	45	90	85	M16	39.5	14	215	115
500 WU	150	110	126	100	30	18	127	118	140	35	70	65	M12	30	10	242	250	50	100	95	M16	44.5	14	235	130
600 WU	177	133	151	120.5	32	23	152.4	127	170.6	38	75	70	M12	33	10	279	301	58	114	111	M20	52	16	274	155
700 WU	200	153	170	132.5	36	23	177.8	146	200.2	40	82	79	M16	35	12	311	345	65	130	127	M20	58	18	287	160
800 WU	220	171.5	170	132.5	40	27	203.2	146	224.8	45	88	85	M16	39.5	14	342	368	70	140	137	M20	62.5	20	312	175
900 WU	245	195	172	141	40	27	228.6	154	252.4	50	95	92	M16	44.5	14	375	401	75	145	140	M20	67.5	20	325	180
1050 WU	295	216	215	165	50	33	266.7	172	281.3	60	115	110	M20	53	18	450	475	80	150	147	M20	71	22	352	200

## Worm Over Driven



Model	Q	H	R	J	U	K	A	B	B1	F	E1	X2	M1	V1	W1	C	T	G	E2	Y2	M2	V2	W2	D	N
400 WO	125	90	120	100	25	18	101.6	108.4	140	32	65	60	M12	27	10	215	225	45	90	85	M16	39.5	14	215	115
500 WO	150	110	135	115	25	18	127	118	165	35	70	65	M12	30	10	242	250	50	100	95	M16	44.5	14	235	130
600 WO	177	133	155	125	30	23	152.4	127	200	38	75	70	M12	33	10	279	301	58	114	111	M20	52	16	274	155
700 WO	200	153	170	133	44	23	177.8	146.2	244	40	82	79	M16	35	12	311	345	65	130	127	M20	58	18	287	160
800 WO	220	171.5	170	133	44	27	203.2	145.8	269	45	68	85	M16	39.5	14	342	314	70	140	137	M20	62.5	20	312	175
900 WO	245	195	207	170	44	27	228.6	154.4	296	50	95	92	M16	44.5	14	375	401	75	145	140	M20	67.5	20	325	180
1050 WO	295	216	242	200	50	33	266.7	172.3	331	60	115	110	M20	53	18	450	475	80	150	147	M20	71	22	352	200

All dimensions are in mm unless otherwise specified. In view of our constant endeavor to improve the quality of our products, we reserve the right to alter or change specifications without prior notice.

## 5GW... Worm Gear Reducer

Input rpm	Gear Ratio	Output rpm	Gear Rating	Model								
				W225	W300	W400	W500	W600	W700	W800	W900	
1500	5.00	300.00	Input Mechanical Power (Kw)	3.80	8.00	14.10	24.60	41.00	59.50	79.60	103.00	
			Output Mechanical Torque (Nm)	112.50	231.80	436	764	1267	1846	2475	3209	
			Input Thermal Power (Kw)	-	-	16.80	26.80	40.30	58.60	72.70	98.50	
			Output Thermal Torque (Nm)	-	-	521	834	1246	1819	2258	3076	
		1000	200.00	Input Mechanical Power (Kw)	3.00	6.10	11.50	20.10	33.50	48.20	64.00	82.80
				Output Mechanical Torque (Nm)	129.60	262.10	527	928	1544	2230	2965	3847
				Input Thermal Power (Kw)	-	-	12.20	19.20	28.60	41.40	51.50	70.10
				Output Thermal Torque (Nm)	-	-	560	887	1314	1914	2386	3252
		750	150.00	Input Mechanical Power (Kw)	2.10	4.04	9.56	16.80	28.30	41.10	55.30	72.10
				Output Mechanical Torque (Nm)	117.30	234.10	582	1027	1723	2519	3400	4439
				Input Thermal Power (Kw)	-	-	9.96	15.50	22.90	33.00	40.90	55.40
				Output Thermal Torque (Nm)	-	-	606	948	1392	2017	2507	3409
500	100.00	Input Mechanical Power (Kw)	1.52	3.46	7.62	13.40	20.00	32.40	43.50	56.40		
		Output Mechanical Torque (Nm)	132.10	300.70	687	1216	1811	2947	3965	5160		
		Input Thermal Power (Kw)	-	-	7.78	11.90	17.30	24.70	30.40	40.90		
		Output Thermal Torque (Nm)	-	-	702	1081	1566	2243	2769	3739		
1500	7.50	200.00	Input Mechanical Power (Kw)	3.00	6.86	10.50	17.40	30.20	42.90	57.50	88.10	
			Output Mechanical Torque (Nm)	127.00	294.80	450	752	1340	1908	2568	3907	
			Input Thermal Power (Kw)	-	-	15.00	24.00	36.70	53.30	66.60	91.50	
			Output Thermal Torque (Nm)	-	-	645	1041	1632	2376	2973	4059	
		1000	133.33	Input Mechanical Power (Kw)	2.40	5.23	8.20	13.80	24.10	34.70	46.60	71.40
				Output Mechanical Torque (Nm)	155.00	338.00	524	888	1593	2297	3095	4717
				Input Thermal Power (Kw)	-	-	10.90	17.20	26.00	37.40	46.60	64.00
				Output Thermal Torque (Nm)	-	-	695	1105	1713	2479	3100	4226
		750	100.00	Input Mechanical Power (Kw)	1.45	3.50	7.01	11.70	20.50	29.10	38.80	59.40
				Output Mechanical Torque (Nm)	123.90	310.90	592	997	1789	2555	3415	5203
				Input Thermal Power (Kw)	-	-	8.91	13.90	20.80	29.70	36.90	50.40
				Output Thermal Torque (Nm)	-	-	753	1183	1816	2609	3248	4409
500	66.67	Input Mechanical Power (Kw)	1.16	3.65	5.43	9.17	16.00	22.70	30.30	46.60		
		Output Mechanical Torque (Nm)	144.50	388.70	679	1155	2071	2957	3956	6063		
		Input Thermal Power (Kw)	-	-	7.01	10.70	15.80	22.40	27.50	37.20		
		Output Thermal Torque (Nm)	-	-	878	1355	2051	2911	3593	4835		
1500	10.00	150.00	Input Mechanical Power (Kw)	2.80	5.75	9.00	15.10	25.00	36.30	48.50	63.00	
			Output Mechanical Torque (Nm)	146.00	325.80	510	864	1450	2113	2832	3689	
			Input Thermal Power (Kw)	-	-	12.90	20.60	32.50	47.30	59.30	81.00	
			Output Thermal Torque (Nm)	-	-	731	1179	1890	2757	3465	4745	
		1000	100.00	Input Mechanical Power (Kw)	1.65	4.58	7.10	11.90	19.50	28.30	37.80	49.30
				Output Mechanical Torque (Nm)	141.80	389.30	596	1004	1681	2448	3285	4289
				Input Thermal Power (Kw)	-	-	9.36	14.80	23.00	33.10	41.40	56.30
				Output Thermal Torque (Nm)	-	-	787	1251	1981	2867	3593	4907
		750	75.00	Input Mechanical Power (Kw)	1.24	3.21	5.99	9.99	16.40	24.00	32.20	41.90
				Output Mechanical Torque (Nm)	137.40	372.00	665	1116	1871	2752	3702	4829
				Input Thermal Power (Kw)	-	-	7.70	12.00	18.50	26.40	32.70	44.30
				Output Thermal Torque (Nm)	-	-	855	1341	2103	3019	3762	5113
500	50.00	Input Mechanical Power (Kw)	0.98	2.60	4.56	7.74	12.80	18.70	25.00	32.50		
		Output Mechanical Torque (Nm)	161.60	442.00	748	1280	2158	3171	4260	5561		
		Input Thermal Power (Kw)	-	-	6.08	9.30	14.10	19.90	24.50	32.80		
		Output Thermal Torque (Nm)	-	-	999	1540	2383	3376	4168	5613		
1500	12.50	120.00	Input Mechanical Power (Kw)	2.35	4.94	8.19	14.70	22.70	35.30	50.00	67.50	
			Output Mechanical Torque (Nm)	150.10	336.45	584	1056	1635	2559	3638	4922	
			Input Thermal Power (Kw)	-	-	11.10	17.70	28.50	41.00	51.30	70.20	
			Output Thermal Torque (Nm)	-	-	790	1275	2060	2970	3730	5118	
		1000	80.00	Input Mechanical Power (Kw)	1.63	4.21	6.50	11.60	17.90	27.70	38.90	52.00
				Output Mechanical Torque (Nm)	175.15	436.55	686	1239	1915	2976	4201	5633
				Input Thermal Power (Kw)	-	-	8.07	12.70	20.20	28.70	35.80	48.80
				Output Thermal Torque (Nm)	-	-	852	1354	2159	3086	3862	5283
		750	60.00	Input Mechanical Power (Kw)	1.09	2.69	5.46	9.72	14.90	23.20	32.90	44.40
				Output Mechanical Torque (Nm)	144.20	361.35	760	1365	2103	3290	4692	6360
				Input Thermal Power (Kw)	-	-	6.65	10.30	16.20	22.90	28.40	38.40
				Output Thermal Torque (Nm)	-	-	926	1452	2295	3250	4044	5503
500	40.00	Input Mechanical Power (Kw)	0.86	2.25	4.20	7.56	11.60	18.10	25.60	34.50		
		Output Mechanical Torque (Nm)	170.40	455.30	863	1569	2431	3809	5414	7313		
		Input Thermal Power (Kw)	-	-	5.28	8.05	12.50	17.30	21.30	28.50		
		Output Thermal Torque (Nm)	-	-	1085	1671	2608	3639	4484	6044		

## 5GW... Worm Gear Reducer

Input rpm	Gear Ratio	Output rpm	Gear Rating	Model							
				W225	W300	W400	W500	W600	W700	W800	W900
1500	15.00	100.00	Input Mechanical Power (Kw)	1.90	4.13	7.64	13.40	20.20	30.20	42.20	54.80
			Output Mechanical Torque (Nm)	154.20	347.10	672	1195	1725	2598	3641	4743
			Input Thermal Power (Kw)	-	-	9.23	15.30	25.00	36.30	45.50	62.20
			Output Thermal Torque (Nm)	-	-	812	1366	2137	3120	3925	5388
1000	15.00	66.67	Input Mechanical Power (Kw)	1.60	3.84	5.96	10.50	16.00	23.90	33.20	42.90
			Output Mechanical Torque (Nm)	208.50	483.80	773	1386	2024	3043	4245	5512
			Input Thermal Power (Kw)	-	-	6.75	11.00	17.70	25.50	31.80	43.20
			Output Thermal Torque (Nm)	-	-	876	1450	2240	3241	4059	5551
750	15.00	50.00	Input Mechanical Power (Kw)	0.93	2.16	5.58	8.98	14.30	20.30	25.20	34.10
			Output Mechanical Torque (Nm)	151.00	350.70	860	1544	2238	3360	4689	6090
			Input Thermal Power (Kw)	-	-	5.58	8.98	14.30	20.30	25.20	34.10
			Output Thermal Torque (Nm)	-	-	953	1557	2380	3414	4250	5781
500	15.00	33.33	Input Mechanical Power (Kw)	0.74	1.90	3.90	6.89	10.40	15.60	21.60	27.90
			Output Mechanical Torque (Nm)	179.20	468.60	980	1761	2572	3866	5393	7002
			Input Thermal Power (Kw)	-	-	4.44	7.02	11.00	15.40	18.90	25.40
			Output Thermal Torque (Nm)	-	-	1117	1795	2703	3826	4716	6353
1500	20.00	75.00	Input Mechanical Power (Kw)	1.62	3.78	5.56	9.88	15.70	22.60	30.20	39.30
			Output Mechanical Torque (Nm)	161.00	404.30	630	1132	1814	2636	3536	4626
			Input Thermal Power (Kw)	-	-	7.70	12.30	18.70	27.20	34.00	46.50
			Output Thermal Torque (Nm)	-	-	875	1415	2174	3176	3989	5476
1000	20.00	50.00	Input Mechanical Power (Kw)	1.55	2.80	4.35	7.74	12.30	17.90	24.00	31.20
			Output Mechanical Torque (Nm)	236.80	470.60	725	1306	2105	3071	4157	5424
			Input Thermal Power (Kw)	-	-	5.67	8.89	13.30	19.20	23.80	32.50
			Output Thermal Torque (Nm)	-	-	946	1502	2278	3299	4126	5648
750	20.00	37.50	Input Mechanical Power (Kw)	0.86	1.85	3.66	6.51	10.40	15.10	20.20	26.20
			Output Mechanical Torque (Nm)	170.80	391.00	800	1444	2322	3419	4610	5991
			Input Thermal Power (Kw)	-	-	4.70	7.27	10.80	15.40	19.00	25.70
			Output Thermal Torque (Nm)	-	-	1030	1614	2420	3475	4320	5881
500	20.00	25.00	Input Mechanical Power (Kw)	0.62	1.36	2.80	4.99	8.03	11.70	14.30	19.20
			Output Mechanical Torque (Nm)	189.50	431.20	899	1624	2643	3882	5214	6751
			Input Thermal Power (Kw)	-	-	3.76	5.72	8.34	11.70	14.30	19.20
			Output Thermal Torque (Nm)	-	-	1211	1862	2746	3892	4791	6460
1500	25.00	60.00	Input Mechanical Power (Kw)	1.44	3.15	5.70	8.00	12.80	18.90	26.60	36.00
			Output Mechanical Torque (Nm)	176.50	411.10	755	1078	1743	2600	3668	4994
			Input Thermal Power (Kw)	-	-	5.94	11.00	16.80	24.30	30.40	41.60
			Output Thermal Torque (Nm)	-	-	788	1488	2288	3342	4210	5781
1000	25.00	40.00	Input Mechanical Power (Kw)	1.30	2.33	4.49	6.26	10.00	14.80	20.90	28.10
			Output Mechanical Torque (Nm)	232.80	472.80	868	1239	2006	2992	4255	5765
			Input Thermal Power (Kw)	-	-	4.39	7.97	12.00	17.20	21.40	29.00
			Output Thermal Torque (Nm)	-	-	848	1581	2398	3469	4347	5946
750	25.00	30.00	Input Mechanical Power (Kw)	0.75	1.70	3.78	5.25	8.35	12.40	17.60	23.80
			Output Mechanical Torque (Nm)	181.50	432.90	955	1364	2195	3292	4710	6402
			Input Thermal Power (Kw)	-	-	3.64	6.54	9.69	13.80	17.00	23.00
			Output Thermal Torque (Nm)	-	-	921	1701	2550	3656	4552	6190
500	25.00	20.00	Input Mechanical Power (Kw)	0.49	1.23	2.92	4.03	6.50	9.68	13.70	18.30
			Output Mechanical Torque (Nm)	175.50	469.90	1073	1532	2503	3766	5356	7239
			Input Thermal Power (Kw)	-	-	2.93	5.16	7.52	10.50	12.90	17.20
			Output Thermal Torque (Nm)	-	-	1077	1966	2899	4102	5056	6807
1500	30.00	50.00	Input Mechanical Power (Kw)	1.30	2.75	5.28	8.91	12.80	14.70	21.30	28.00
			Output Mechanical Torque (Nm)	186.20	430.70	830	1424	2065	2382	3515	4610
			Input Thermal Power (Kw)	-	-	5.65	9.00	13.60	21.80	28.60	37.40
			Output Thermal Torque (Nm)	-	-	889	1437	2206	3557	4732	6164
1000	30.00	33.33	Input Mechanical Power (Kw)	1.21	2.00	4.16	7.02	10.10	11.50	16.70	21.80
			Output Mechanical Torque (Nm)	256.00	468.90	955	1638	2379	2744	4047	5277
			Input Thermal Power (Kw)	-	-	4.19	6.54	9.78	15.40	20.10	26.10
			Output Thermal Torque (Nm)	-	-	960	1526	2311	3690	4875	6324
750	30.00	25.00	Input Mechanical Power (Kw)	0.60	1.50	3.48	5.87	8.30	9.46	13.80	18.30
			Output Mechanical Torque (Nm)	176.50	435.50	1043	1790	2567	2690	4383	5816
			Input Thermal Power (Kw)	-	-	3.49	5.38	7.94	12.40	16.00	20.70
			Output Thermal Torque (Nm)	-	-	1046	1639	2455	3892	5112	6584
500	30.00	16.67	Input Mechanical Power (Kw)	0.42	1.15	2.69	4.57	6.56	7.46	10.80	14.20
			Output Mechanical Torque (Nm)	176.40	502.80	1172	2029	2957	3414	5041	6618
			Input Thermal Power (Kw)	-	-	2.82	4.26	6.19	9.54	12.20	15.60
			Output Thermal Torque (Nm)	-	-	12229	1891	2786	4376	5700	7252

## 5GW... Worm Gear Reducer

Input rpm	Gear Ratio	Output rpm	Gear Rating	Model							
				W225	W300	W400	W500	W600	W700	W800	W900
1500	35.00	42.86	Input Mechanical Power (Kw)	1.14	2.51	4.13	7.39	11.40	16.10	22.20	22.00
			Output Mechanical Torque (Nm)	182.05	435.05	736	1347	2111	3023	4208	4112
			Input Thermal Power (Kw)	-	-	5.01	8.12	12.50	18.20	23.20	31.20
			Output Thermal Torque (Nm)	-	-	895	1481	2329	3411	4396	5829
1000		28.57	Input Mechanical Power (Kw)	1.02	1.94	3.24	5.80	8.96	12.70	17.40	17.10
			Output Mechanical Torque (Nm)	236.05	521.70	840	1540	2427	3482	4838	4681
			Input Thermal Power (Kw)	-	-	3.73	5.92	9.01	12.90	16.30	21.80
			Output Thermal Torque (Nm)	-	-	976	1573	2440	3540	4536	5997
750		21.43	Input Mechanical Power (Kw)	0.53	1.45	2.73	4.91	7.49	10.60	14.50	14.40
			Output Mechanical Torque (Nm)	168.25	480.90	922	1700	2650	3788	5281	5157
			Input Thermal Power (Kw)	-	-	3.11	4.88	7.34	10.40	13.10	17.40
			Output Thermal Torque (Nm)	-	-	1053	1691	2595	3731	4751	6243
500	14.29	Input Mechanical Power (Kw)	0.40	1.04	2.11	3.79	5.84	8.27	11.30	11.10	
		Output Mechanical Torque (Nm)	184.30	514.30	1032	1906	3003	4308	5991	5823	
		Input Thermal Power (Kw)	-	-	2.11	3.79	5.84	8.27	11.30	11.10	
		Output Thermal Torque (Nm)	-	-	1238	1953	2951	4185	5280	6863	
1500	40.00	37.50	Input Mechanical Power (Kw)	0.97	2.27	3.45	6.13	9.71	14.30	19.30	24.80
			Output Mechanical Torque (Nm)	177.90	439.40	683	1248	2009	3007	4105	5300
			Input Thermal Power (Kw)	-	-	4.53	7.41	11.20	16.50	20.80	28.10
			Output Thermal Torque (Nm)	-	-	901	1512	2327	3470	4413	6010
1000		25.00	Input Mechanical Power (Kw)	0.82	1.88	2.69	4.76	7.66	11.30	15.20	19.40
			Output Mechanical Torque (Nm)	216.10	574.50	773	1410	2305	3468	4722	6071
			Input Thermal Power (Kw)	-	-	3.38	5.42	8.09	11.80	14.70	19.80
			Output Thermal Torque (Nm)	-	-	973	1607	2438	3600	4553	6174
750		18.75	Input Mechanical Power (Kw)	0.45	1.40	2.28	4.48	6.61	9.50	11.80	15.80
			Output Mechanical Torque (Nm)	160.00	526.30	852	1566	2525	3777	5145	6618
			Input Thermal Power (Kw)	-	-	2.83	4.48	6.61	9.50	11.80	15.80
			Output Thermal Torque (Nm)	-	-	1060	1728	2592	3795	4769	6427
500	12.50	Input Mechanical Power (Kw)	0.37	0.93	1.75	3.11	5.00	7.37	9.89	12.60	
		Output Mechanical Torque (Nm)	192.20	525.80	947	1738	2839	4268	5809	7465	
		Input Thermal Power (Kw)	-	-	2.30	3.57	5.18	7.35	9.03	11.90	
		Output Thermal Torque (Nm)	-	-	1246	1998	2947	4262	5301	7071	
1500	45.00	33.33	Input Mechanical Power (Kw)	0.85	2.05	3.00	5.32	8.30	12.20	17.20	22.50
			Output Mechanical Torque (Nm)	169.15	431.20	655	1198	1892	2791	4016	5319
			Input Thermal Power (Kw)	-	-	4.27	6.97	10.30	14.50	18.70	25.90
			Output Thermal Torque (Nm)	-	-	937	1575	2365	3331	4355	6114
1000		22.22	Input Mechanical Power (Kw)	0.78	1.67	2.35	4.13	6.57	9.66	13.60	17.70
			Output Mechanical Torque (Nm)	221.35	536.50	743	1350	2173	3217	4620	6109
			Input Thermal Power (Kw)	-	-	3.19	5.11	7.48	10.40	13.20	18.20
			Output Thermal Torque (Nm)	-	-	1014	1675	2479	3458	4495	6277
750		16.67	Input Mechanical Power (Kw)	0.42	1.34	1.98	3.51	5.52	8.10	11.40	14.80
			Output Mechanical Torque (Nm)	164.40	548.40	813	1493	2378	3509	5030	6637
			Input Thermal Power (Kw)	-	-	2.68	4.23	6.12	8.41	10.60	14.60
			Output Thermal Torque (Nm)	-	-	1106	1803	2637	3643	4707	6534
500	11.11	Input Mechanical Power (Kw)	0.34	0.89	1.52	2.67	4.26	6.30	8.83	11.50	
		Output Mechanical Torque (Nm)	186.10	559.20	900	1643	2653	3942	5353	7460	
		Input Thermal Power (Kw)	-	-	2.19	3.39	4.82	6.53	8.17	11.10	
		Output Thermal Torque (Nm)	-	-	1302	2087	3000	4084	5230	7192	
1500	50.00	30.00	Input Mechanical Power (Kw)	0.72	1.82	2.63	4.64	7.30	10.70	15.10	20.40
			Output Mechanical Torque (Nm)	160.40	423.00	627	1129	1812	2700	3837	5235
			Input Thermal Power (Kw)	-	-	4.04	6.38	9.63	13.90	17.30	23.60
			Output Thermal Torque (Nm)	-	-	969	1561	2399	3509	4422	6080
1000		20.00	Input Mechanical Power (Kw)	0.73	1.45	2.07	3.61	5.75	8.49	11.90	16.10
			Output Mechanical Torque (Nm)	226.60	498.50	714	1272	2067	3099	4406	6020
			Input Thermal Power (Kw)	-	-	3.03	4.69	6.98	9.95	12.30	16.70
			Output Thermal Torque (Nm)	-	-	1050	1660	2515	3641	4562	6244
750		15.00	Input Mechanical Power (Kw)	0.39	1.28	1.74	3.06	4.84	7.12	10.00	13.50
			Output Mechanical Torque (Nm)	168.80	570.50	776	1400	2258	3379	4817	6567
			Input Thermal Power (Kw)	-	-	2.55	3.89	5.72	8.08	9.93	13.40
			Output Thermal Torque (Nm)	-	-	1146	1787	2676	3839	4778	6500
500	10.00	Input Mechanical Power (Kw)	0.30	0.85	1.33	2.32	3.72	5.52	7.74	10.40	
		Output Mechanical Torque (Nm)	180.00	592.60	857	1533	2504	3776	5372	7310	
		Input Thermal Power (Kw)	-	-	2.09	3.13	4.52	6.29	7.65	10.20	
		Output Thermal Torque (Nm)	-	-	1351	2069	3047	4312	5310	7152	

## 5GW... Worm Gear Reducer

Input rpm	Gear Ratio	Output rpm	Gear Rating	Model							
				W225	W300	W400	W500	W600	W700	W800	W900
1500	60.00	25.00	Input Mechanical Power (Kw)	0.55	1.60	2.05	3.63	5.74	8.44	11.80	15.80
			Output Mechanical Torque (Nm)	140.70	434.00	563	1023	1652	2470	3491	4716
			Input Thermal Power (Kw)	-	-	3.66	5.79	8.71	12.60	15.70	21.30
			Output Thermal Torque (Nm)	-	-	1020	1648	2528	3702	4670	6420
1000		16.67	Input Mechanical Power (Kw)	0.49	1.26	1.63	2.84	4.48	6.61	9.22	12.50
			Output Mechanical Torque (Nm)	161.20	490.00	645	1158	1866	2798	3959	5413
			Input Thermal Power (Kw)	-	-	2.76	4.28	6.34	9.03	11.20	15.10
			Output Thermal Torque (Nm)	-	-	1107	1755	2651	3840	4813	6580
750		12.50	Input Mechanical Power (Kw)	0.31	1.12	1.35	2.39	3.77	5.53	7.79	10.50
			Output Mechanical Torque (Nm)	154.00	564.80	693	1260	2032	3037	4343	5938
			Input Thermal Power (Kw)	-	-	2.34	3.56	5.22	7.35	9.03	12.10
			Output Thermal Torque (Nm)	-	-	1210	1892	2825	4052	5044	6851
500	8.33	Input Mechanical Power (Kw)	0.25	0.70	1.03	1.81	2.88	4.28	6.02	8.11	
		Output Mechanical Torque (Nm)	172.00	561.80	764	1374	2230	3380	4831	6590	
		Input Thermal Power (Kw)	-	-	1.92	2.87	4.14	5.76	6.99	9.28	
		Output Thermal Torque (Nm)	-	-	1431	2195	3223	4561	5616	7551	
1500	70.00	21.43	Input Mechanical Power (Kw)	0.43	1.30	1.72	3.01	4.74	6.97	9.72	13.10
			Output Mechanical Torque (Nm)	124.70	406.10	516	929	1500	2250	3181	4348
			Input Thermal Power (Kw)	-	-	3.14	4.93	7.40	10.60	13.20	18.00
			Output Thermal Torque (Nm)	-	-	955	1542	2366	3465	4364	5998
1000		14.29	Input Mechanical Power (Kw)	0.39	1.12	1.36	2.36	3.73	5.50	7.67	10.30
			Output Mechanical Torque (Nm)	148.50	486.20	585	1047	1697	2550	3621	4924
			Input Thermal Power (Kw)	-	-	2.38	3.67	5.42	7.70	9.51	12.80
			Output Thermal Torque (Nm)	-	-	1034	1639	2479	3595	4503	6164
750		10.70	Input Mechanical Power (Kw)	0.26	0.87	1.14	1.99	3.12	4.60	6.47	8.73
			Output Mechanical Torque (Nm)	150.80	520.30	629	1136	1827	2751	3938	5395
			Input Thermal Power (Kw)	-	-	2.02	3.07	4.48	6.30	7.72	10.30
			Output Thermal Torque (Nm)	-	-	1128	1764	2637	3789	4716	6416
500	7.14	Input Mechanical Power (Kw)	0.20	0.65	0.88	1.53	2.43	3.61	5.05	6.78	
		Output Mechanical Torque (Nm)	155.20	599.90	694	1247	2035	3082	4392	5988	
		Input Thermal Power (Kw)	-	-	1.66	2.48	3.57	4.96	6.01	7.97	
		Output Thermal Torque (Nm)	-	-	1329	2040	3000	4252	5238	7056	

## WORM GEAR REDUCER

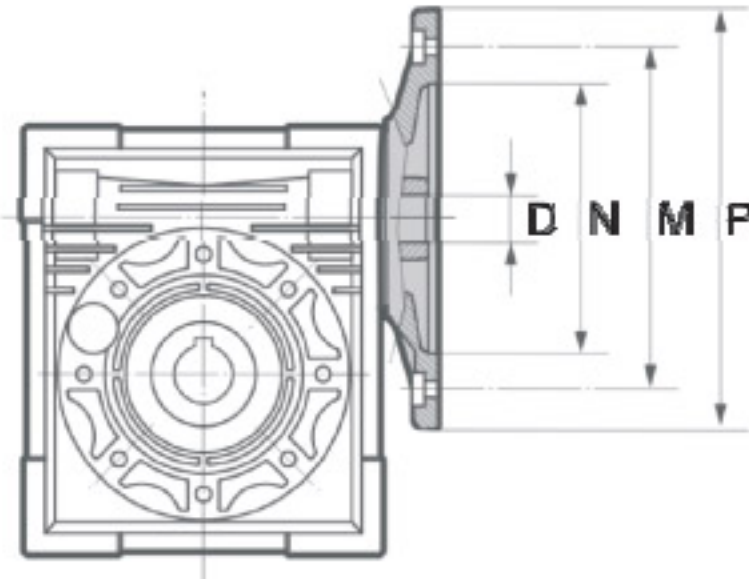


**5GU**



# 5GW... Worm Gear Reducer

Type "U"

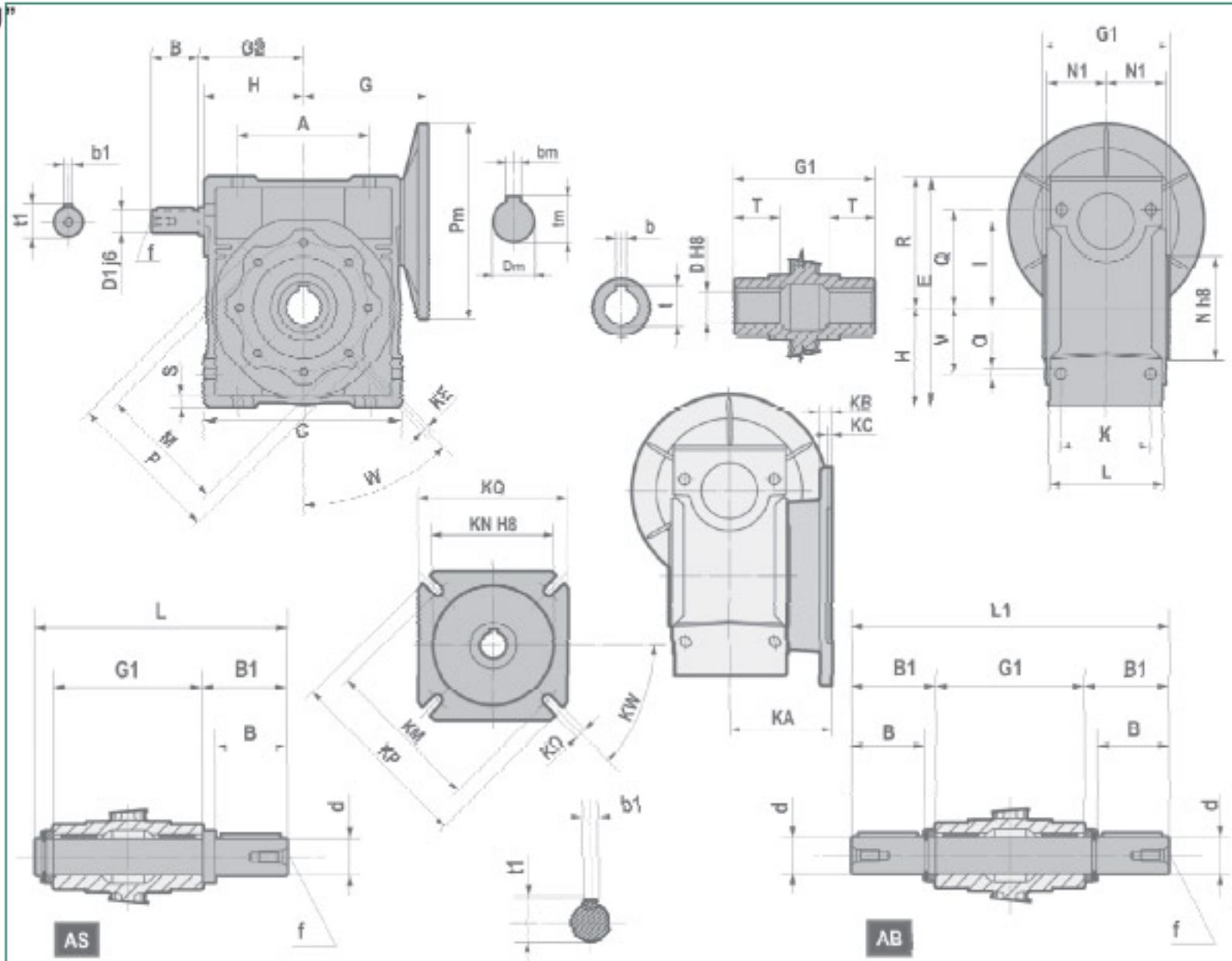


Model	Frame	KW	N	M	P	I (RATIO)										
						7.5	10	15	20	25	30	40	50	60	80	100
						D (SHAFT DIA)										
25	56B14	0.06/0.009	50	65	80	9	9	9	9	9	9	9	9	9	9	9
30	63B5	0.12/0.18	95	115	140	11	11	11	11	11	11	11	11	11	11	11
	63B14		60	75	90											
	56B5	0.06/0.09	80	100	120	9	9	9	9	9	9	9	9	9	9	-
	56B14		50	65	80											
40	71B5	0.25/0.18	110	130	160	14	14	14	14	14	14	14	14	-	-	-
	71B14		70	85	105											
	63B5	0.12/0.18	95	115	140	11	11	11	11	11	11	11	11	11	11	11
	63B14		60	75	90											
	56B5	0.06/0.09	80	100	120	-	-	-	-	-	-	-	9	9	9	9
50	80B5	0.55/0.75	130	165	200	19	19	19	19	19						
	80B14		80	100	120											
	71B5	0.25/0.37	110	130	160	14	14	14	14	14	14	14	14	14	14	
	71B14		70	85	105											
	63B5	0.12/0.18	95	115	140	-	-	-	-	-	-	11	11	11	11	11
63	90B5	1.1/1.5	130	165	200	24	24	24	24	24	24	24	-	-	-	-
	90B14		95	115	140											
	80B5	0.55/0.75	130	165	200	19	19	19	19	19	19	19	19	19	19	-
	80B14		80	100	120											
	71B5	0.25/0.37	110	130	160	-	-	-	-	-	-	14	14	14	14	14
	71B14		70	85	105											
75	100/112B5	2.2/4	180	215	250	28	28	28	-	-	-	-	-	-	-	-
	100/112B14		110	130	160											
	90B5	1.1/1.5	130	165	200	24	24	24	24	24	24	24	24	-	-	-
	90B14		95	115	140											
	80B5	0.55/0.75	130	165	200	-	-	-	-	19	19	19	19	19	19	19
	80B14		80	100	120											
71B5	0.25/0.37	110	130	160	-	-	-	-	-	-	-	14	14	14	14	
90	100/112B5	2.2/4	180	215	250	28	28	28	28	28	28	-	-	-	-	-
	100/112B14		110	130	160											
	90B5	1.1/1.5	130	165	200	24	24	24	24	24	24	24	24	24	-	-
	90B14		95	115	140											
	80B5	0.55/0.75	130	165	200	-	-	-	-	-	19	19	19	19	19	19
	80B14		80	100	120											
110	132B5	5.5/7.5	230	265	300	38	38	38	38	-	-	-	-	-	-	-
	100/112B5	2.2/4	180	215	250	28	28	28	28	28	28	28	28	28	-	-
	90B5	1.1/1.5	130	165	200	-	-	-	-	-	24	24	24	24	24	24
	80B5	0.55/0.75	130	165	200	-	-	-	-	-	-	-	-	-	19	19
	80B14		80	100	120											
130	132B5	5.5/7.5	230	265	300	38	38	38	38	38	38	38	-	-	-	-
	100/112B5	2.2/4	180	215	250	-	-	-	-	28	28	28	28	28	28	28
	90B5	1.1/1.5	130	165	200	-	-	-	-	-	-	-	-	-	24	24

All dimensions are in mm unless otherwise specified. In view of our constant endeavor to improve the quality of our products, we reserve the right to alter or change specifications without prior notice.

# 5GW... Worm Gear Reducer

Type "U"



Model	A	C	D	E	F	G	H	I	L	M	Nh8	O	P	Q	R	S	V	K	G1	B
30	54	80	14	97	32	63	40	30	56	65	55	6.5	75	44	57	5.5	27	44	63	20
40	70	100	18/19	121	43	70	50	40	71	75	60	7	85	55	71	6.5	35	60	78	23
50	80	120	25	144	49	80	60	50	85	85	70	8.5	100	64	84	7	40	70	92	30
63	100	144	25/28	174	67	95	72	63	103	95	80	8.5	110	80	102	8	50	85	112	40
75	120	174	28	205	72	112.5	86	75	113	115	95	11	140	93	119	10	60	90	118	50
90	140	208	35	238	73	130	103	90	130	130	110	13	160	102	135	11	70	100	140	50
110	170	252.5	42	294	-	160	127.5	110	142	165	130	14	200	125	167.5	15	85	115	155	60
130	200	292.5	45	334	-	180	147.5	130	154	215	180	16	250	140	187.5	15	100	120	170	80
Model	G2	N1	KA	KB	KC	KE	W	KM	KN H8	KO	KP	KQ	Dm/D1	bm	tm	b1	t1			
30	50	29	54.5	6	4	M6X11 (N.4)	0°	68	50	6.5 (4/90°)	80	70	9	5	16.3	3	10.2			
40	60	36.5	67	7	4	M6X11 (N.4)	45°	87	60	9 (4/90°)	110	95	11	6	20.8 (21.8)	4	12.5			
50	74	43.5	90	9	5	M8X10 (N.4)	45°	90	70	11 (4/90°)	125	110	14	8	28.3	5	16			
63	90	53	97	10	6	M8X14 (N.8)	45°	150	115	11 (4/90°)	180	142	19	8	28.3 (31.3)	6	21.5			
75	105	57	111	13	6	M8X14 (N.8)	45°	165	130	14 (4/90°)	200	170	24	8	31.3	8	27			
90	125	67	111	13	6	M10X18 (N.8)	45°	175	152	14 (4/90°)	210	200	24	10	38.3	8	27			
110	142	74	139	15	6	M10X18 (N.8)	45°	220	170	14 (8/45°)	270	250	28	12	45.3	8	31			
130	162	80.5	140	15	6	M12X21 (N.8)	45°	255	180	16 (8/45°)	320	290	30	14	48.8	8	33			
Model	d	B	B1	L	L1	f	b1	t1												
30	14h6	30	32.5	102	128	M6	5	16												
40	18h6	40	43	128	164	M6	6	20.5												
50	25h6	50	53.5	153	199	M10	8	28												
63	25h6	50	53.5	173	219	M10	8	28												
75	28h6	60	63.5	192	247	M10	8	31												
90	35h6	80	84.5	234	309	M12	10	38												
110	42h6	80	84.5	249	324	M16	12	45												
130	45h6	80	85	265	340	M16	14	48.5												

All dimensions are in mm unless otherwise specified. In view of our constant endeavor to improve the quality of our products, we reserve the right to alter or change specifications without prior notice.

## 5GW... Worm Gear Reducer

Type "U"

(n1=1400)

Model	i	n2 (1/min)	P1 (Kw)	M2 (Nm)
30	5	280.00	0.91	18
	7.5	186.70	0.41	18
	10	140.00	0.32	18
	15	93.30	0.23	18
	20	70.00	0.18	18
	25	56.00	0.18	21
	30	46.70	0.15	20
	40	35.00	0.11	18
	50	28.00	0.09	17
	60	23.30	0.08	16
80	17.50	0.05	13	

Model	i	n2 (1/min)	P1 (Kw)	M2 (Nm)
75	7.5	186.70	4.10	185
	10	140.00	3.20	195
	15	93.30	2.30	200
	20	70.00	1.90	210
	25	56.00	1.50	200
	30	46.70	1.50	230
	40	35.00	1.10	220
	50	28.00	0.89	210
	60	23.30	0.75	200
	80	17.50	0.58	190
	100	14.00	0.48	180

Model	i	n2 (1/min)	P1 (Kw)	M2 (Nm)
40	5	280.00	1.10	34
	7.5	186.70	0.90	40
	10	140.00	0.69	40
	15	93.30	0.48	40
	20	70.00	0.37	39
	25	56.00	0.30	38
	30	46.70	0.31	45
	40	35.00	0.23	41
	50	28.00	0.18	39
	60	23.30	0.15	36
	80	17.50	0.12	33
	100	14.00	0.09	29

Model	i	n2 (1/min)	P1 (Kw)	M2 (Nm)
90	-	-	-	-
	7.5	186.70	6.30	290
	10	140.00	5.10	310
	15	93.30	4.10	360
	20	70.00	3.10	355
	25	56.00	2.40	340
	30	46.70	2.60	410
	40	35.00	1.80	360
	50	28.00	1.40	340
	60	23.30	1.10	320
	80	17.50	0.83	285
	100	14.00	0.67	270

Model	i	n2 (1/min)	P1 (Kw)	M2 (Nm)
50	5	280.00	2.00	62
	7.5	186.70	1.60	71
	10	140.00	1.20	72
	15	93.30	0.88	74
	20	70.00	0.68	73
	25	56.00	0.54	70
	30	46.70	0.57	84
	40	35.00	0.42	76
	50	28.00	0.34	73
	60	23.30	0.28	68
	80	17.50	0.22	65
	100	14.00	0.16	55

Model	i	n2 (1/min)	P1 (Kw)	M2 (Nm)
110	-	-	-	-
	7.5	186.70	12.00	552
	10	140.00	9.80	598
	15	93.30	7.50	656
	20	70.00	5.60	644
	25	56.00	4.70	679
	30	46.70	4.50	725
	40	35.00	3.30	702
	50	28.00	2.60	660
	60	23.30	2.10	616
	80	17.50	1.40	515
	100	14.00	1.10	483

Model	i	n2 (1/min)	P1 (Kw)	M2 (Nm)
63	7.5	186.70	2.80	128
	10	140.00	2.20	130
	15	93.30	1.60	140
	20	70.00	1.20	135
	25	56.00	1.00	130
	30	46.70	1.10	160
	40	35.00	0.76	145
	50	28.00	0.60	135
	60	23.30	0.51	130
	80	17.50	0.39	122
100	14.00	0.34	118	

Model	i	n2 (1/min)	P1 (Kw)	M2 (Nm)
130	7.5	186.70	16.10	750
	10	140.00	13.50	820
	15	93.30	10.30	920
	20	70.00	7.80	910
	25	56.00	6.50	930
	30	46.70	6.40	1040
	40	35.00	4.90	1050
	50	28.00	3.80	980
	60	23.30	3.10	900
	80	17.50	2.30	840
100	14.00	1.70	740	

For higher model contact JMR

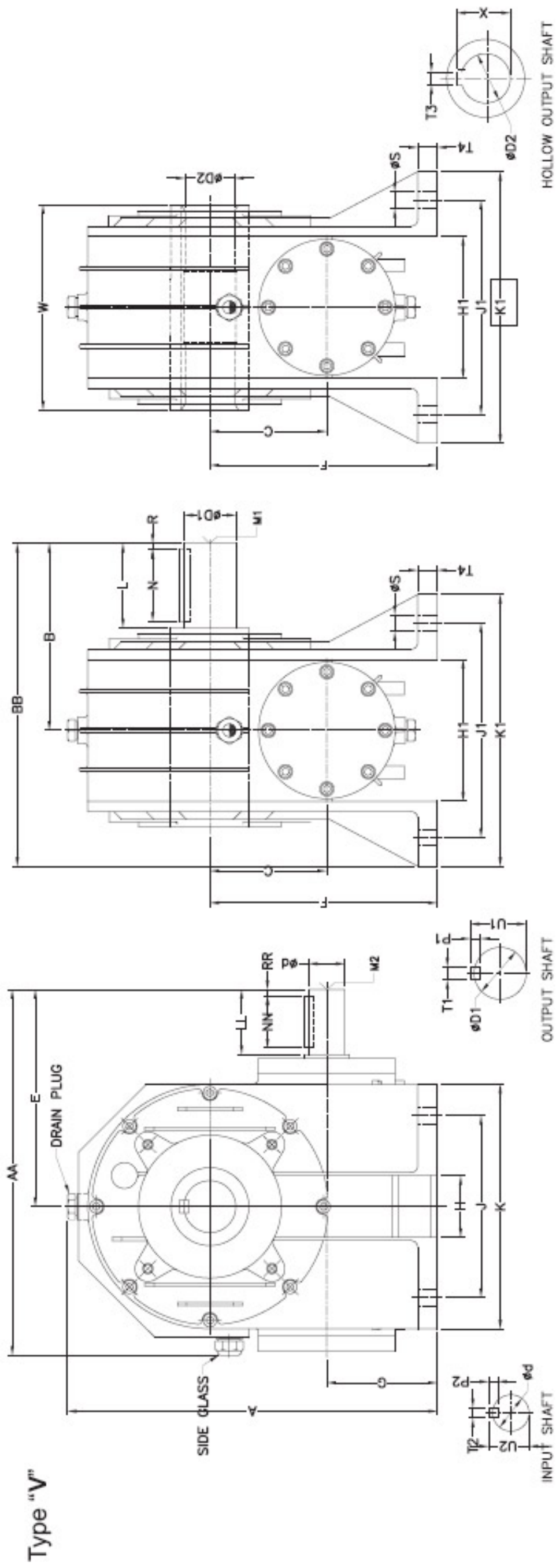
All dimensions are in mm unless otherwise specified. In view of our constant endeavor to improve the quality of our products, we reserve the right to alter or change specifications without prior notice.

## WORM GEAR REDUCER



**5GV**

# 5GV... Worm Gear Reducer



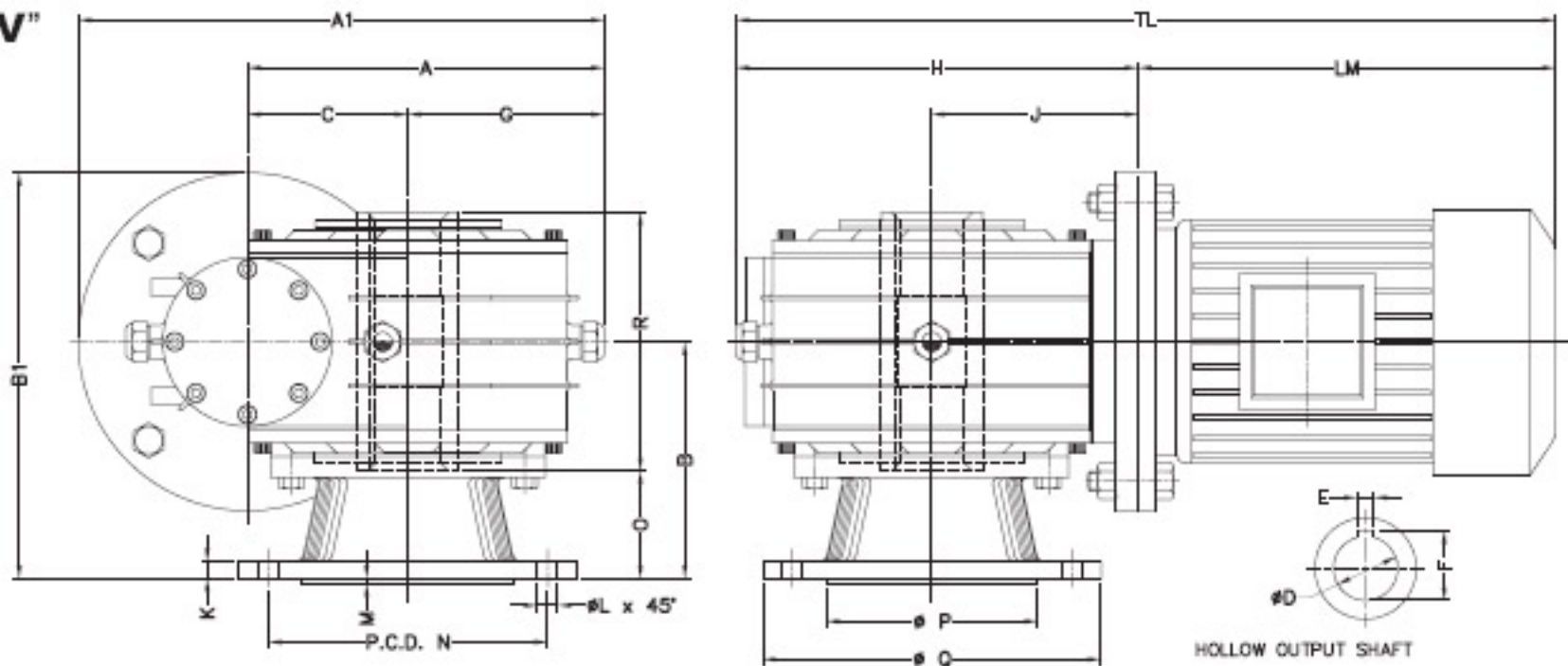
MODEL	CLEARANCE DIMENSIONS										MOUNTING DETAILS										INPUT SHAFT										OUTPUT SHAFT										OUTPUT SHAFT HOLLOW			
	A	AA	B	BB	C	E	F	G	H	H1	J	J1	K	K1	T4	ØS	Ød	LL	M2	M5	M6	MM	P2	RR	T2	U2	ØD1	L	M1	N	P1	R	T1	U1	ØD2	H7	T3	W	X					
50	203	188	102	159	50	108	125	75	27	82	90	126	124	150	10	19	30	30	M5	M5	M6	20	6	5	6	21.5	30	40	M5	30	7	5	8	33	24	8	124	27.3						
60	230	222	118	185	60	130	140	80	37	96	100	144	148	174	12	22	35	35	M6	M6	M6	25	6	5	6	24.5	32	45	M6	35	8	5	10	35	25	8	145	28.3						
70	246	240	125	194	70	139	150	80	38	100	120	160	160	190	12	24	40	40	M6	M6	M6	30	7	5	8	27	35	50	M6	40	8	5	10	38	28	8	149	31.3						
80	272	275	139	213	80	163	165	85	47	111	130	165	183	209	15	24	45	45	M8	M8	M8	35	7	5	8	27	38	60	M8	50	8	5	10	41	35	10	158	38.3						
90	285	282	144	218	90	167	175	85	47	109	140	165	188	209	15	28	50	50	M8	M8	M8	40	7	5	8	31	40	65	M8	55	8	5	12	43	38	10	158	41.3						
110	336	349	160	240	110	203	200	90	97	120	190	190	240	230	18	35	60	60	M10	M10	M10	50	8	5	10	38	45	75	M10	65	9	5	14	48.5	42	12	170	45.3						
130	373	392	173	260	130	233	225	95	97	138	210	204	265	254	18	40	70	70	M12	M12	M12	60	8	5	12	43	50	80	M12	70	10	5	16	54	48	14	185	51.8						
150	436	477	213	311	150	261	250	100	118	148	280	234	340	284	20	50	80	80	M14	M14	M14	70	9	5	14	53.5	60	110	M14	100	11	5	18	64	55	16	206	59.3						
175	509	531	236	347	175	312	300	125	127	166	290	272	380	342	30	55	90	90	M14	M14	M14	70	10	10	16	59	70	120	M14	100	12	10	20	74.5	60	18	232	64.4						
200	597	603	265	394	200	354	360	160	146	199	330	325	430	395	35	60	100	100	M16	M16	M16	80	11	10	18	64	80	130	M16	110	14	10	22	85.5	70	20	269	74.9						

All dimensions are in mm unless otherwise specified. In view of our constant endeavor to improve the quality of our products, we reserve the right to alter or change specifications without prior notice.



# 5GW... Worm Gear Reducer

Type "V"



MODEL	MOTOR FRAME	A	A1	B	B1	C	$\phi D$ H7	E	F	G	H	J	K	L	M	N	O	P	Q	R	LM	TL
FH50	63	133	203	129	199	50	24	8	27.3	83	158	84	10	10	3	130	64	110	160	124	202	360
	71		213		209						164	90									231	395
	80		233		229						168	94									247	415
FH60	71	155	225	137	217	60	25	8	28.3	95	193	103	10	10	3	130	64.5	110	160	145	231	424
	80		235		237						193	103									247	440
	90S		255		237						197	106									252	449
	90L		255		237						197	106									277	474
FH70	71	171	241	139	219	70	28	8	31.3	101	196	100	10	12	3	165	64.5	125	200	149	231	427
	80		251		239						202	106									247	449
	90S		271		239						207	111									252	459
	90L		271		239						207	111									277	484
FH80	80	192	292	143	243	80	35	10	38.3	112	234	123	10	12	3	165	63.5	125	200	158	247	481
	90S		292		243						234	123									252	486
	90L		292		243						234	123									277	511
	100L		317		268						242	131									306	548
	112M		317		268						242	131									328	570
FH90	80	205	305	143	243	90	38	10	41.3	115	234	123	10	12	3	165	63.5	125	200	158	247	481
	90S		305		243						234	123									252	486
	90L		305		243						234	123									277	511
	100L		330		268						241	130									306	547
	112M		330		268						241	130									328	569
	132S		355		293						261	150									369	630
FH110	90S	256	356	150	250	110	42	12	45.3	146	294	155	16	15	4	215	64.5	180	250	170	252	546
	90L		356		250						294	155									277	571
	100L		381		275						303	163									306	609
	112M		381		275						303	163									328	631
	132S		406		300						317	177									369	686
	132M		406		300						317	177									407	724
FH130	90S	289	389	142	242	130	48	14	51.8	159	319	167	16	15	4	265	49.5	230	300	185	252	571
	90L		389		242						319	167									277	596
	100L		414		267						330	177									306	636
	112M		414		267						330	177									328	658
	132S		439		292						335	183									369	704
	132M		439		292						335	183									407	742
FH150	100L	346	471	156	281	150	55	16	59.3	196	401	209	18	17	4	300	53	250	350	206	306	707
	112M		471		281						401	209									328	729
	132S		496		306						406	214									369	775
	132M		496		306						406	214									407	813
	160M		521		331						417	225									475	892
	160L		521		331						417	225									519	936
FH175	112M	394	519	206	331	175	60	18	64.4	219	445	233	22	20	6	350	90	300	400	232	328	773
	132S		544		356						453	241									369	822
	132M		544		356						453	241									407	860
	160M		569		381						459	247									475	934
	160L		569		381						459	247									519	978
FH200	132S	447	597	245	395	200	70	20	74.9	247	514	266	25	22	6	390	110	320	440	269	328	773
	132M		597		395						514	266									369	822
	160M		622		420						524	276									407	860
	160L		622		420						524	276									475	934
	180M		622		420						524	276									519	978

All dimensions are in mm unless otherwise specified. In view of our constant endeavor to improve the quality of our products, we reserve the right to alter or change specifications without prior notice.

# 5GW... Worm Gear Reducer

Type "V"

Selection at Input 1500 RPM

Model			W-50	W-60	W-70	W-80	W-90	W-110	W-130	W-150	W-175	W-200	W-225	W-250	W-300	W-350
Gear Ratio	Output RPM	Capacity														
<b>7.5</b>	<b>200</b>	<b>HP1</b>	<b>2.5</b>	<b>3.65</b>	<b>5.8</b>	<b>7.7</b>	<b>9.74</b>	<b>17.81</b>	<b>25.3</b>	<b>36</b>	<b>55.8</b>	<b>75.4</b>	<b>85.05</b>	<b>121.9</b>	<b>152</b>	<b>239</b>
		Kw1	1.875	2.74	4.35	5.78	7.31	13.36	18.98	27.00	41.85	56.55	63.79	91.43	114.00	179.25
		T2	80	116	185	245	310	567	806	1146	1777	2401	2708	3881	4840	7610
		DE	89	89	89	89	89	89	89	89	89	89	89	89	89	89
		<b>M-HP1</b>	<b>1</b>	<b>2</b>	<b>3</b>	<b>3</b>	<b>5</b>	<b>7.5</b>	<b>10</b>	<b>15</b>	<b>20</b>	<b>25</b>	<b>30</b>	<b>40</b>	<b>50</b>	<b>60</b>
		M-KW1	0.75	1.5	2.25	2.25	3.75	5.625	7.5	11.25	15	18.75	22.5	30	37.5	45
		M-T2	32	64	96	96	159	239	318	478	637	796	955	1274	1592	1910
		SF	2.5	1.83	1.93	2.6	1.948	2.37	2.53	2.40	2.79	3.02	2.84	3.05	3.04	3.98

<b>10</b>	<b>150</b>	<b>HP1</b>	<b>2.5</b>	<b>3.15</b>	<b>4.8</b>	<b>6.6</b>	<b>8.28</b>	<b>15.07</b>	<b>23.1</b>	<b>31</b>	<b>41.11</b>	<b>59.8</b>	<b>78</b>	<b>98.9</b>	<b>130</b>	<b>182</b>
		KW1	1.88	2.36	3.6	4.95	6.21	11.30	17.33	23.25	30.83	44.85	58.50	74.18	97.50	136.50
		T2	103	129	197	271	340	618	948	1272	1686	2453	3200	4057	5333	7466
		DE	86	86	86	86	86	86	86	86	86	86	86	86	86	86
		<b>M-HP1</b>	<b>1</b>	<b>2</b>	<b>3</b>	<b>3</b>	<b>5</b>	<b>7.5</b>	<b>10</b>	<b>15</b>	<b>20</b>	<b>25</b>	<b>25</b>	<b>30</b>	<b>40</b>	<b>50</b>
		M-KW1	0.75	1.5	2.25	2.25	3.75	5.625	7.5	11.25	15	18.75	18.75	22.5	30	37.5
		M-T2	41	82	123	123	205	308	410	615	820	1026	1026	1231	1641	2051
		SF	2.5	1.58	1.60	2.2	1.656	2.01	2.31	2.07	2.06	2.39	3.12	3.30	3.25	3.64

<b>15</b>	<b>100</b>	<b>HP1</b>	<b>1.7</b>	<b>2.35</b>	<b>4</b>	<b>4.51</b>	<b>7.16</b>	<b>11.23</b>	<b>16.5</b>	<b>24</b>	<b>31.13</b>	<b>52</b>	<b>72.8</b>	<b>83.9</b>	<b>105</b>	<b>163</b>
		KW1	1.28	1.76	3	3.38	5.37	8.42	12.38	18.00	23.35	39.00	54.60	62.93	78.75	122.25
		T2	100	138	235	265	420	659	968	1408	1826	3051	4271	4922	6160	9563
		DE	82	82	82	82	82	82	82	82	82	82	82	82	82	82
		<b>M-HP1</b>	<b>1</b>	<b>2</b>	<b>3</b>	<b>3</b>	<b>5</b>	<b>7.5</b>	<b>10</b>	<b>15</b>	<b>20</b>	<b>25</b>	<b>25</b>	<b>30</b>	<b>40</b>	<b>50</b>
		M-KW1	0.75	1.5	2.25	2.25	3.75	5.625	7.5	11.25	15	18.75	18.75	22.5	30	37.5
		M-T2	59	117	176	176	293	440	587	880	1173	1467	1467	1760	2347	2934
		SF	1.7	1.18	1.33	1.5	1.432	1.50	1.65	1.60	1.56	2.08	2.91	2.80	2.63	3.26

<b>20</b>	<b>75</b>	<b>HP1</b>	<b>1.6</b>	<b>2.25</b>	<b>3</b>	<b>3.96</b>	<b>5.15</b>	<b>9.59</b>	<b>13.2</b>	<b>19</b>	<b>27.9</b>	<b>40.56</b>	<b>62.4</b>	<b>66.7</b>	<b>89</b>	<b>130</b>
		KW1	1.20	1.69	2.25	2.97	3.86	7.19	9.90	14.25	20.93	30.42	46.80	50.03	66.75	97.50
		T2	122	172	229	302	393	732	1007	1450	2129	3096	4762	5091	6792	9922
		DE	80	80	80	80	80	80	80	80	80	80	80	80	80	80
		<b>M-HP1</b>	<b>0.5</b>	<b>1</b>	<b>1.5</b>	<b>2</b>	<b>3</b>	<b>5</b>	<b>7.5</b>	<b>12.5</b>	<b>15</b>	<b>25</b>	<b>25</b>	<b>30</b>	<b>40</b>	<b>50</b>
		M-KW1	0.38	0.75	1.125	1.5	2.25	3.75	5.625	9.375	11.25	18.75	18.75	22.5	30	37.5
		M-T2	38	76	114	153	229	382	572	954	1145	1908	1908	2290	3053	3816
		SF	3.2	2.25	2.00	2.0	1.72	1.92	1.76	1.52	1.86	1.62	2.50	2.22	2.23	2.60



# 5GW... Worm Gear Reducer

## Type "V"

Model			W-50	W-60	W-70	W-80	W-90	W-110	W-130	W-150	W-175	W-200	W-225	W-250	W-300	W-350
Gear Ratio	Output RPM	Capacity														
<b>25</b>	<b>60</b>	<b>HP1</b>	<b>1.3</b>	<b>2.1</b>	<b>2.75</b>	<b>3.52</b>	<b>5.04</b>	<b>8.22</b>	<b>11</b>	<b>16</b>	<b>22.85</b>	<b>36.4</b>	<b>54.6</b>	<b>56.35</b>	<b>74</b>	<b>109</b>
		KW1	0.98	1.58	2.0625	2.64	3.78	6.17	8.25	12.00	17.14	27.30	40.95	42.26	55.50	81.75
		T2	121	195	256	327	469	765	1023	1488	2125	3386	5079	5241	6883	10139
		DE	78	78	78	78	78	78	78	78	78	78	78	78	78	78
		<b>M-HP1</b>	<b>0.5</b>	<b>1</b>	<b>1.5</b>	<b>2</b>	<b>3</b>	<b>3</b>	<b>5</b>	<b>10</b>	<b>15</b>	<b>20</b>	<b>20</b>	<b>25</b>	<b>30</b>	<b>40</b>
		M-KW1	0.38	0.75	1.125	1.5	2.25	2.25	3.75	7.5	11.25	15	15	18.75	22.5	30
		M-T2	47	93	140	186	279	279	465	930	1395	1860	1860	2325	2790	3721
		SF	2.6	2.10	1.83	1.8	1.68	2.74	2.20	1.60	1.52	1.82	2.73	2.25	2.47	2.73
<b>30</b>	<b>50</b>	<b>HP1</b>	<b>1.1</b>	<b>1.55</b>	<b>2.45</b>	<b>3.08</b>	<b>4.48</b>	<b>7.39</b>	<b>9.9</b>	<b>15</b>	<b>20.9</b>	<b>29.9</b>	<b>47</b>	<b>50.6</b>	<b>70</b>	<b>92</b>
		KW1	0.83	1.16	1.8375	2.31	3.36	5.54	7.43	11.25	15.68	22.43	35.25	37.95	52.50	69.00
		T2	123	173	273	344	500	825	1105	1674	2333	3337	5246	5648	7813	10269
		DE	78	78	78	78	78	78	78	78	78	78	78	78	78	78
		<b>M-HP1</b>	<b>0.5</b>	<b>1</b>	<b>1.5</b>	<b>2</b>	<b>3</b>	<b>3</b>	<b>5</b>	<b>10</b>	<b>15</b>	<b>20</b>	<b>20</b>	<b>25</b>	<b>30</b>	<b>40</b>
		M-KW1	0.38	0.75	1.125	1.5	2.25	2.25	3.75	7.5	11.25	15	15	18.75	22.5	30
		M-T2	56	112	167	223	335	335	558	1116	1674	2232	2232	2790	3349	4465
		SF	2.2	1.55	1.83	1.5	1.49	2.46	1.98	1.50	1.39	1.50	2.35	2.02	2.33	2.30
<b>40</b>	<b>37.5</b>	<b>HP1</b>	<b>0.8</b>	<b>1.25</b>	<b>2</b>	<b>2.42</b>	<b>3.36</b>	<b>6.02</b>	<b>7.99</b>	<b>12</b>	<b>16.8</b>	<b>26</b>	<b>41.6</b>	<b>44.85</b>	<b>59</b>	<b>73</b>
		KW1	0.60	0.94	1.5	1.82	2.52	4.52	5.69	9.00	12.60	19.50	31.20	33.64	44.25	54.75
		T2	110	172	275	332	462	827	1043	1649	2308	3572	5715	6161	8105	10028
		DE	72	72	72	72	72	72	72	72	72	72	72	72	72	72
		<b>M-HP1</b>	<b>0.5</b>	<b>0.75</b>	<b>1</b>	<b>1.5</b>	<b>2</b>	<b>3</b>	<b>5</b>	<b>7.5</b>	<b>12.5</b>	<b>15</b>	<b>15</b>	<b>20</b>	<b>25</b>	<b>30</b>
		M-KW1	0.38	0.5625	0.75	1.125	1.5	2.25	3.75	5.625	9.375	11.25	11.25	15	18.75	22.5
		M-T2	69	103	137	206	275	412	687	1030	1717	2061	2061	2748	3434	4121
		SF	1.6	1.67	2.00	1.6	1.68	2.01	1.52	1.60	1.34	1.73	2.77	2.24	2.36	2.43
<b>50</b>	<b>30</b>	<b>HP1</b>	<b>0.63</b>	<b>0.95</b>	<b>1.55</b>	<b>2.09</b>	<b>2.46</b>	<b>4.65</b>	<b>6.49</b>	<b>9.5</b>	<b>13.85</b>	<b>22</b>	<b>35.1</b>	<b>35.6</b>	<b>47</b>	<b>65</b>
		KW1	0.47	0.71	1.1625	1.57	1.85	3.49	4.87	7.13	10.39	16.50	26.33	26.70	35.25	48.75
		T2	102	154	251	339	399	754	1053	1541	2246	3568	5693	5774	7622	10542
		DE	68	68	68	68	68	68	68	68	68	68	68	68	68	68
		<b>M-HP1</b>	<b>0.33</b>	<b>0.75</b>	<b>1</b>	<b>1</b>	<b>2</b>	<b>3</b>	<b>5</b>	<b>7.5</b>	<b>10</b>	<b>15</b>	<b>15</b>	<b>20</b>	<b>25</b>	<b>30</b>
		M-KW1	0.25	0.5625	0.75	0.75	1.5	2.25	3.75	5.625	7.5	11.25	11.25	15	18.75	22.5
		M-T2	54	122	162	162	324	487	811	1216	1622	2433	2433	3244	4055	4865
		SF	1.91	1.27	1.55	2.1	1.23	1.55	1.30	1.27	1.39	1.47	2.34	1.78	1.88	2.17

All dimensions are in mm unless otherwise specified. In view of our constant endeavor to improve the quality of our products, we reserve the right to alter or change specifications without prior notice.

# 5GW... Worm Gear Reducer

Type "V"

Model			W-50	W-60	W-70	W-80	W-90	W-110	W-130	W-150	W-175	W-200	W-225	W-250	W-300	W-350	
Gear Ratio	Output RPM	Capacity															
60	25	HP1	0.5	0.75	1.2	1.87	2.01	3.97	5.8	8	11.9	18.2	28.6	29.9	42	55	
		KW1	0.38	0.56	0.9	1.40	1.51	2.98	4.35	6.00	8.93	13.65	21.45	22.43	31.50	41.25	
		T2	92	137	220	343	368	727	1062	1465	2180	3334	5239	5477	7693	10074	
		DE	64	64	64	64	64	64	64	64	64	64	64	64	64	64	64
		M-HP1	0.33	0.5	0.75	1	1.5	2	3	5	7.5	10	12.5	15	25	25	
		M-KW1	0.25	0.375	0.5625	0.75	1.125	1.5	2.25	3.75	5.625	7.5	9.375	11.25	18.75	18.75	
		M-T2	60	92	137	183	275	366	550	916	1374	1832	2290	2748	4579	4579	
		SF	1.52	1.50	1.60	1.9	1.34	1.99	1.93	1.60	1.59	1.82	2.29	1.99	1.68	2.20	
70	21.4	HP1	0.4	0.71	1.1	1.54	1.62	3.42	5.17	6.75	9.75	14.69	24.7	25.3	34	52	
		KW1	0.30	0.53	0.825	1.16	1.22	2.57	3.88	5.06	7.31	11.02	18.53	18.98	25.50	39.00	
		T2	83	147	228	319	335	708	1070	1397	2018	3041	5113	5238	7039	10765	
		DE	62	62	62	62	62	62	62	62	62	62	62	62	62	62	62
		M-HP1	0.25	0.5	0.75	1	1.5	2	3	5	7.5	10	10	10	10	10	
		M-KW1	0.19	0.375	0.5625	0.75	1.125	1.5	2.25	3.75	5.625	7.5	7.5	7.5	7.5	7.5	
		M-T2	52	104	155	207	311	414	621	1035	1553	2070	2070	2070	2070	2070	
		SF	1.60	1.42	1.47	1.5	1.08	1.71	1.72	1.35	1.30	1.47	2.47	2.53	3.40	5.20	
80	18.8	HP1	0.3	0.49	0.7	1.06	1.37	1.99	3.16	4.55	6.4	9.28	15	20	25	35	
		KW1	0.225	0.37	0.525	0.80	1.03	1.49	2.37	3.41	4.80	6.96	11.25	15.00	18.75	26.25	
		T2	69	112	160	243	314	456	724	1042	1465	2125	3434	4579	5724	8014	
		DE	60	60	60	60	60	60	60	60	60	60	60	60	60	60	
		M-HP1	0.25	0.33	0.5	0.75	1	1.5	3	3	5	7.5	7.5	10	12.5	15	
		M-KW1	0.19	0.2475	0.375	0.5625	0.75	1.125	2.25	2.25	3.75	5.625	5.625	7.5	9.375	11.25	
		M-T2	57	76	114	172	229	343	687	687	1145	1717	1717	2290	2862	3434	
		SF	1.20	1.48	1.40	1.4	1.37	1.33	1.05	1.52	1.28	1.24	2.00	2.00	2.00	2.33	

All dimensions are in mm unless otherwise specified. In view of our constant endeavor to improve the quality of our products, we reserve the right to alter or change specifications without prior notice.