

UNIVERSAL JOINT



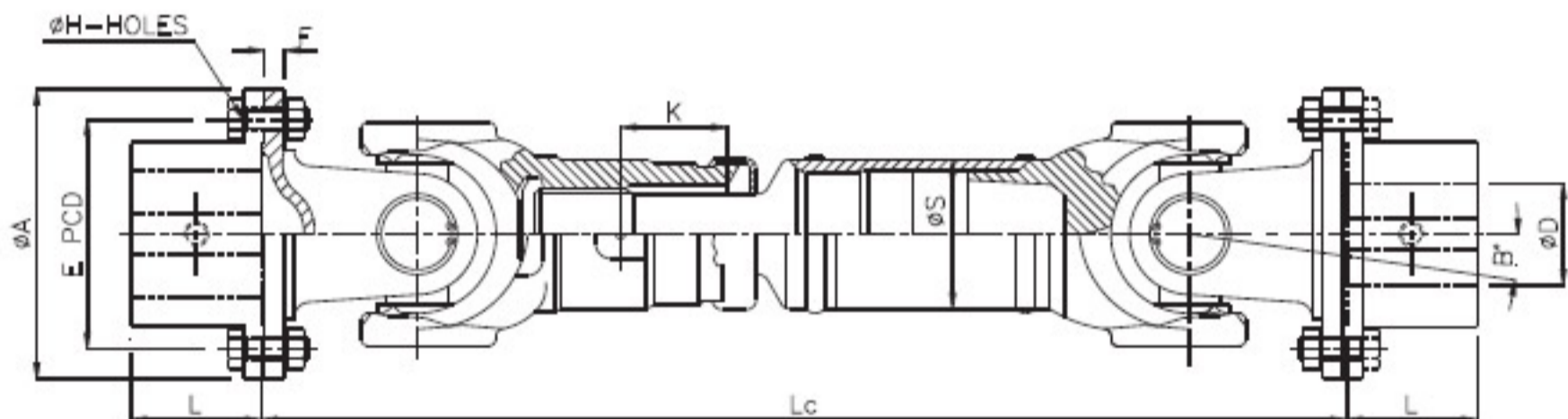
16C... Universal Joint

Service factor 'K1' (for life of a joint 10,000 working hours)

A	Light shock loads (continuous loads) Centrifugal pumps, fans, conveyors	1.1 to 1.5
B	Medium shock loads (Non-continuous loads) Centrifugal pumps & conveyors, printing machinery, small paper & textile machinery, Bar mills.	1.5 to 2
C	Heavy shock loads Roller tables, Presses, Heavy tube mills, pinch roll, Bending machine, Compressor, marine transmissions	2 to 3
D	Extra Heavy shock loads Working roller tables, cold rolling mills, vibrating conveyors.	3 to 6



Continuous Operating angle in Degree	3	4	6	8	10	12	15 to 18	20
Joint angle factor K2	1	1.1	1.25	1.4	1.5	1.6	1.7	1.8



TECHNICAL DATA

Cardan Shaft Series	Cardan Shaft Torque Nm	Flange Dia. A	Hole Dia. H	No. of Flange Hole	Flange PCD E	Flange Thickness F	Pipe Dia. S	Spline Length K	Angle B	Max Bore D	Hub Length L	Minimum Length Lc	Maximum Length Lc (Without support)		
													1000 rpm	1500 rpm	3000 rpm
1140	570	87.3	8.26	4	69.9	5.2	63.5	42.9	14°	40	45	258	2050	1750	1250
1260	770	96.8	9.86	4	79.4	6.8	63.5	50.8	20°	45	60	321	2050	1770	1275
1410	2040	RECT	11.35	4	95.3	7.5	76.2	57.2	18°	55	70	363	2100	1925	1385
1550	3300	RECT	12.9	4	120.7	10.4	76.2	60	18°	73	90	420	2100	1940	1400
1600	4050	174.6	9.73	8	155.5	9.5	88.9	69.9	20°	105	110	533	2150	2100	1545

• For series 1410 & 1550 flanges are rectangular however hubs are cylindrical.