

RIGHT ANGLE GEARMOTOR

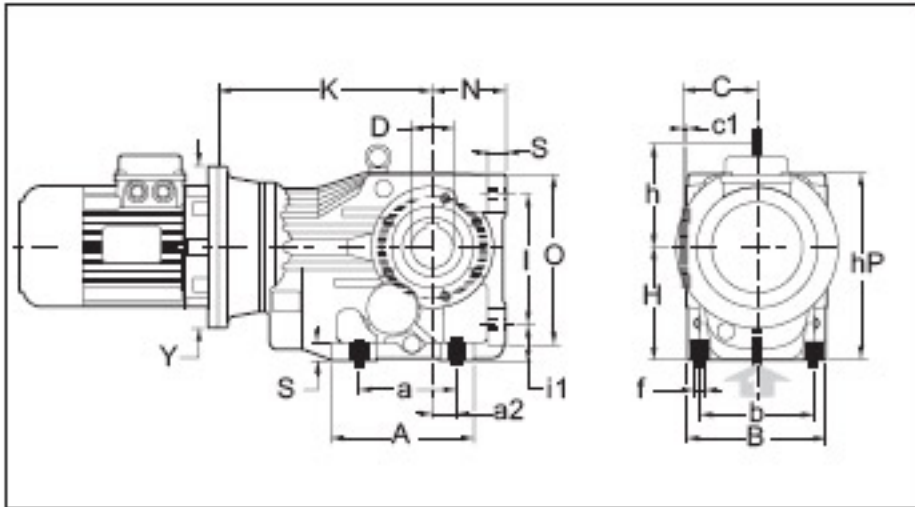


6G

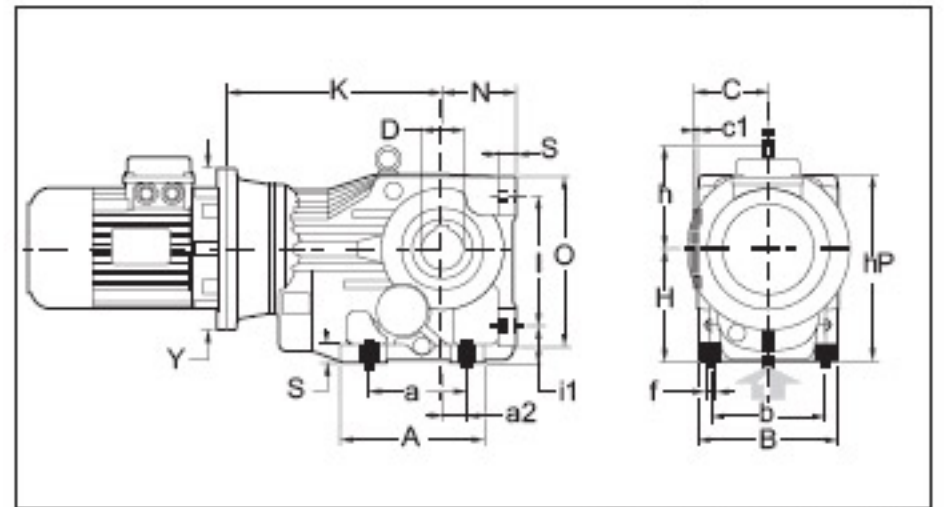
6G... Right Angle Gear Motor

RB

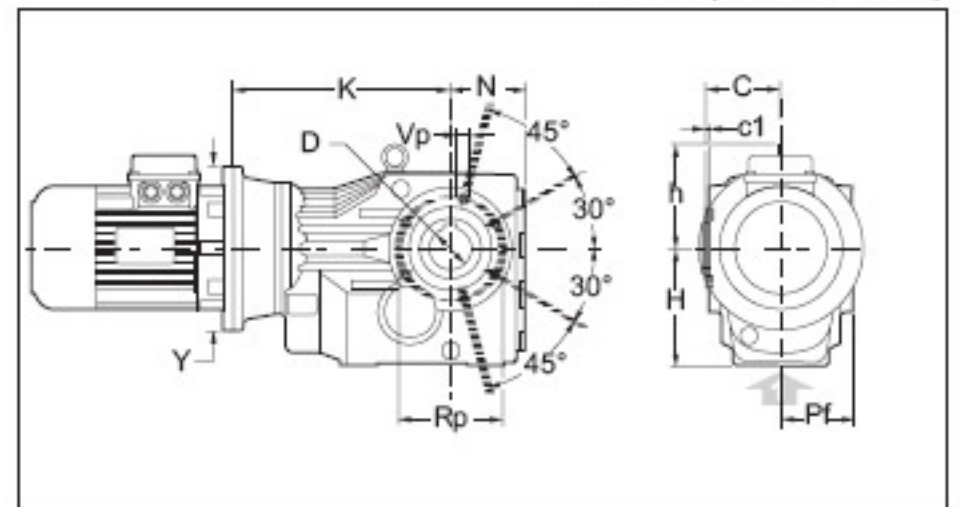
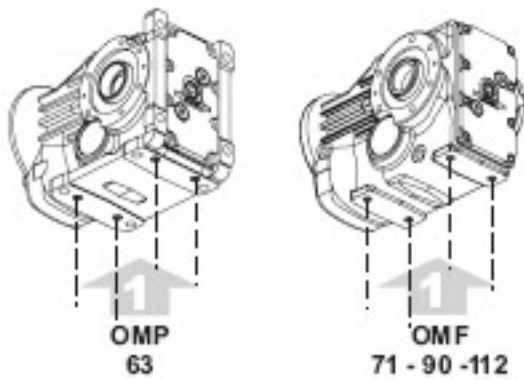
RBP (63)



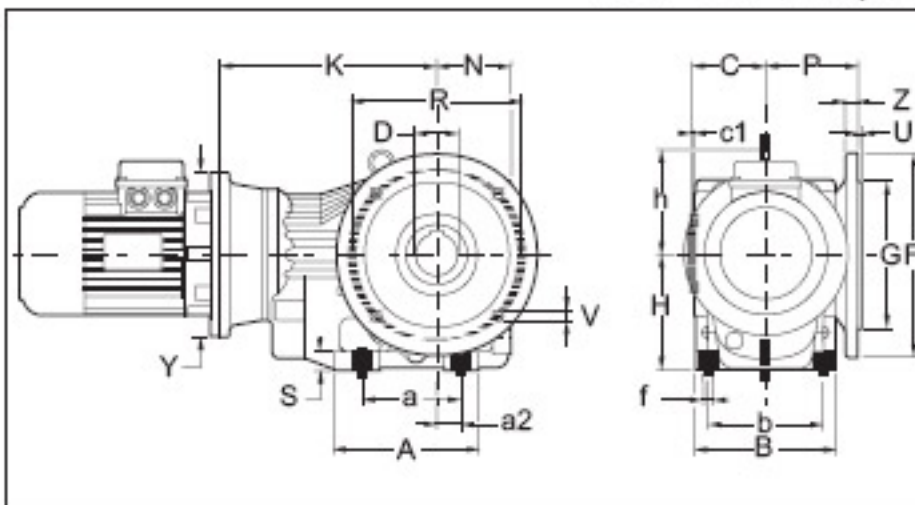
RBP (71-90-112)



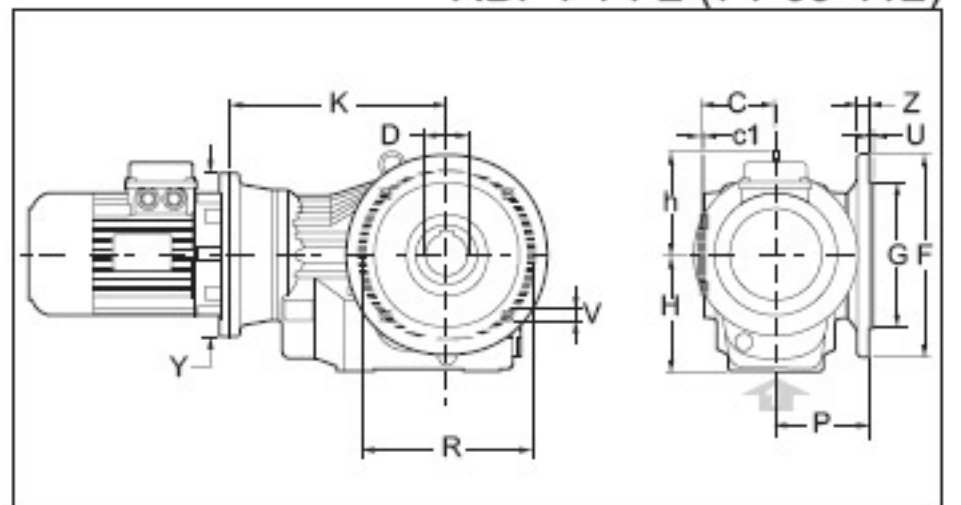
RBF (71-90-112)



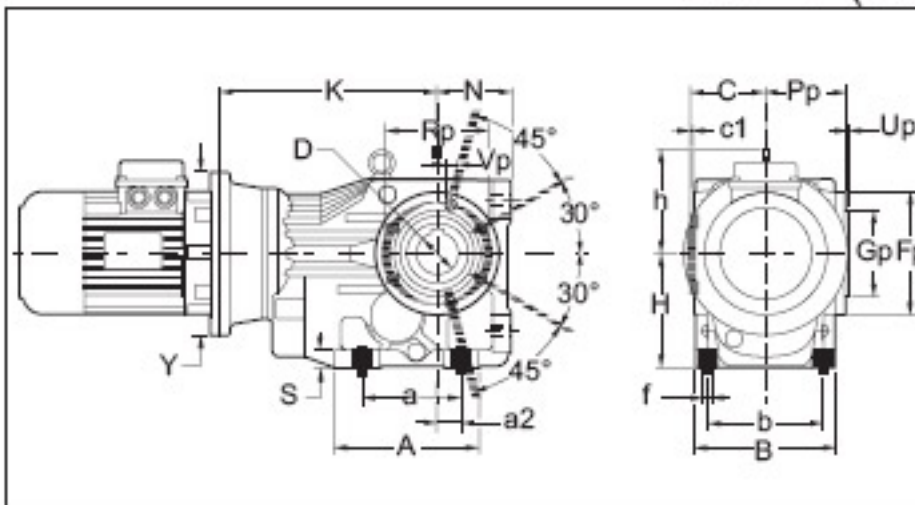
RBP F1-F2 (63)



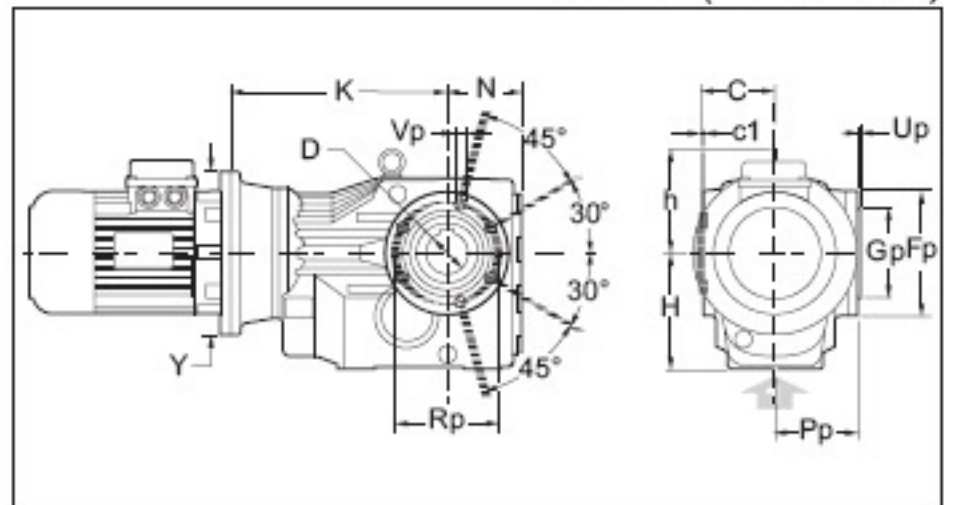
RBF F1-F2 (71-90-112)



RBP P (63)



RBF P (71-90-112)



6G... Right Angle Gear Motor

RB	a	A	a2	b	B	C	c1	D H7	f	h	H	hP	I	i1	N	O	Pf	S
63	110	147	28	100	120	60	2,5	30 (25) (28)	11	100	100	170	115	32	63	150	57.5	14
71	130	165	35	120	142	75	3	35 (30) (32)	11	108	112	183	130	37	71	170	72	18
90	120	182	30	140	170	90	3.5	40 (42) (45) (48)	14	129	140	232	160	45	90	212	86.5	22
112	150	215	40	165	200	105	4	50 (55)	17.5	151	180	294	200	56	112	264	101	25

RB	Gp g6	Fp	Pp	Rp	Up	Vp		F	G g6	P	R	U	V	Z
63	80	105	69	90	3	N°6 M6x12	F1	160	110	84	130	3.5	N°4 9	10
							F2	-	-		-	-		
71	80	120	83	100	3	N°6 M8x15	F1	200	130	100	165	3.5	N°4 11	12
							F2	160	110		130	3.5	N°4 9x5	10
90	105	150	98.5	125	3.5	N°6 M12x18	F1	250	180	113	215	4	N°4 13.5	15
							F2	-	-		-	-	-	
112	125	175	115	150	3.5	N°6 M14x18	F1	300	230	142	265	4	N°4 13.5	16
							F2	-	-		-	-	-	

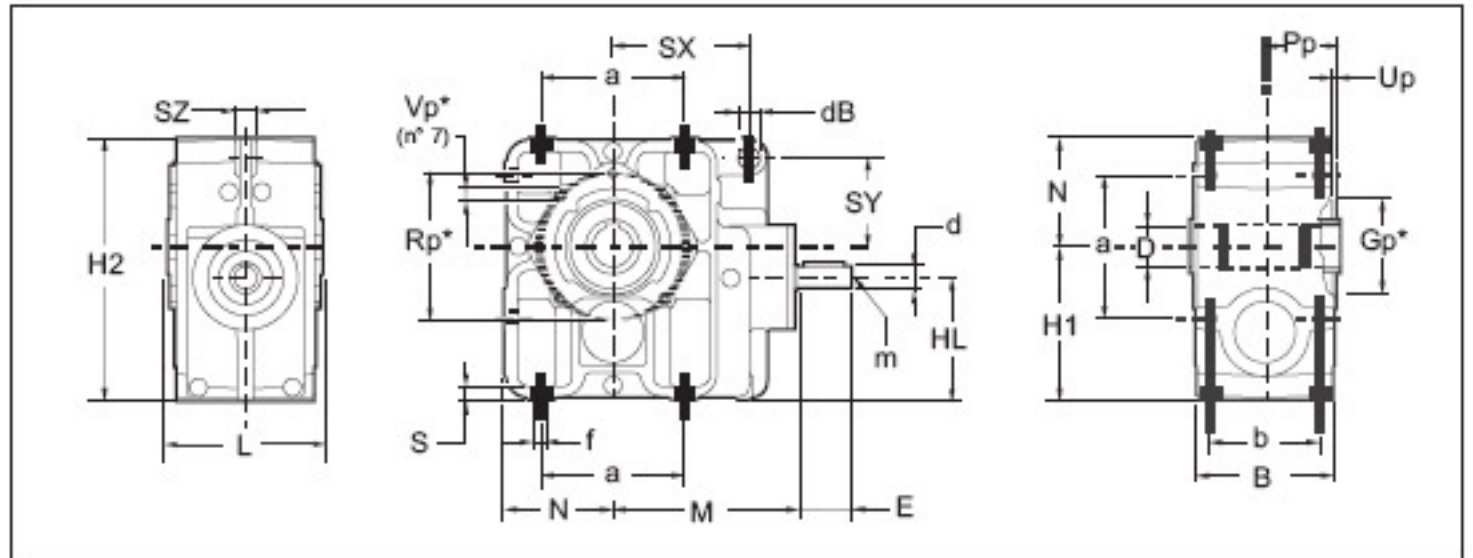
RB	IEC	63		71		90		112		
		Y	K	Y	K	Y	K	Y	K	
	B5		140	193	140	217	160	249	200	304
		160	193	160	217	200	264	250	319	
		200	213	200	237	250	274	300	340	
		250	223	250	247	300	300	350	370	
B14			120	213	120	237	120	264	-	-
			140	213	140	237	140	264	-	-
			160	223	160	247	160	274	-	-
			-	-	-	-	200	300	-	-

*The K dimensions refer to the standard B5 and B14 shaft/flange combinations.
As far as the dimensions of shaft/flange combinations on request are concerned, please contact our technical department.*

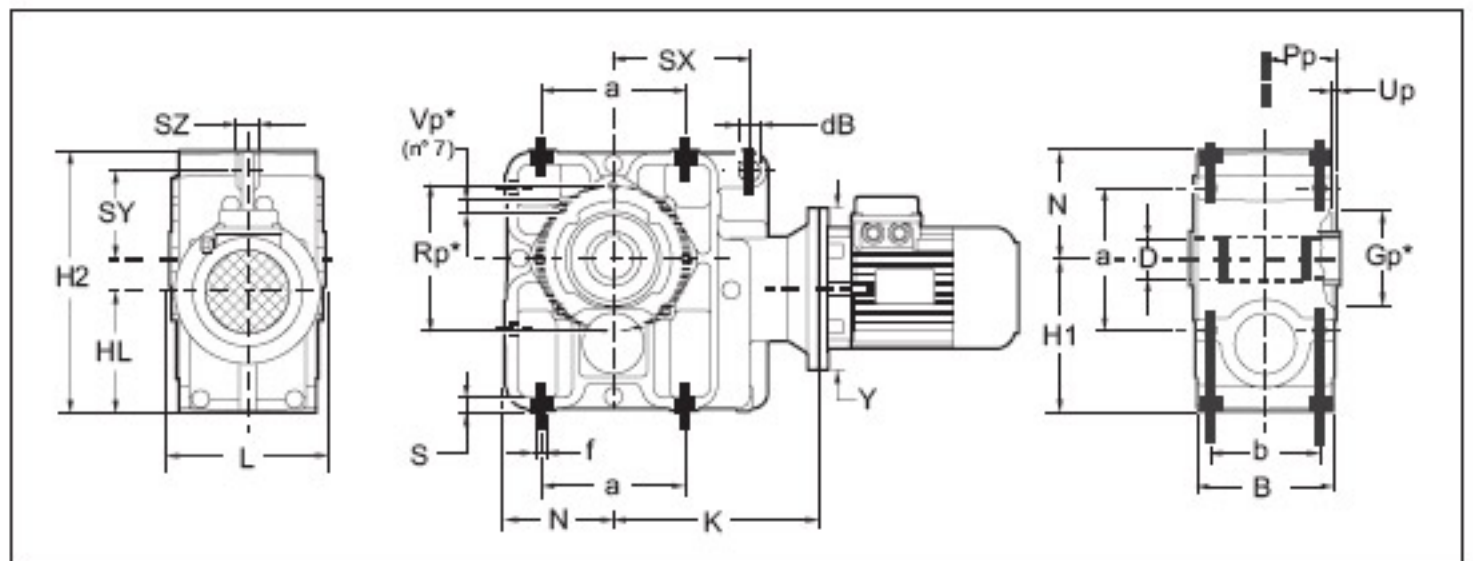
6G... Right Angle Gear Motor

RB3 / RB4

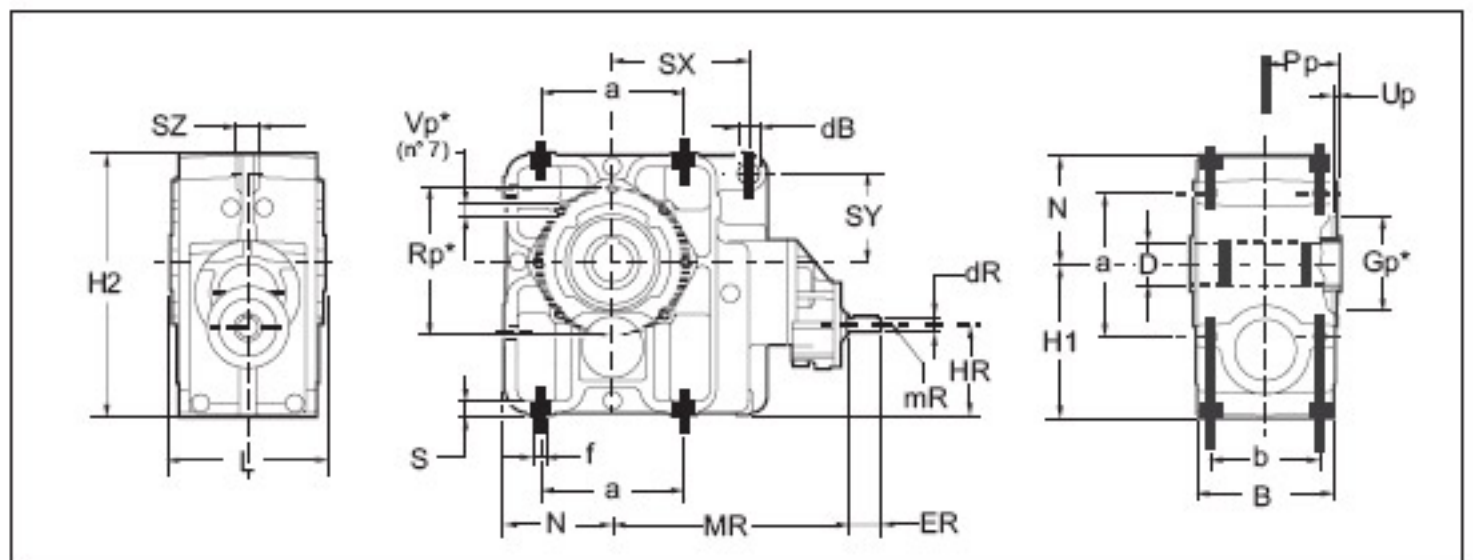
RB3_ECE



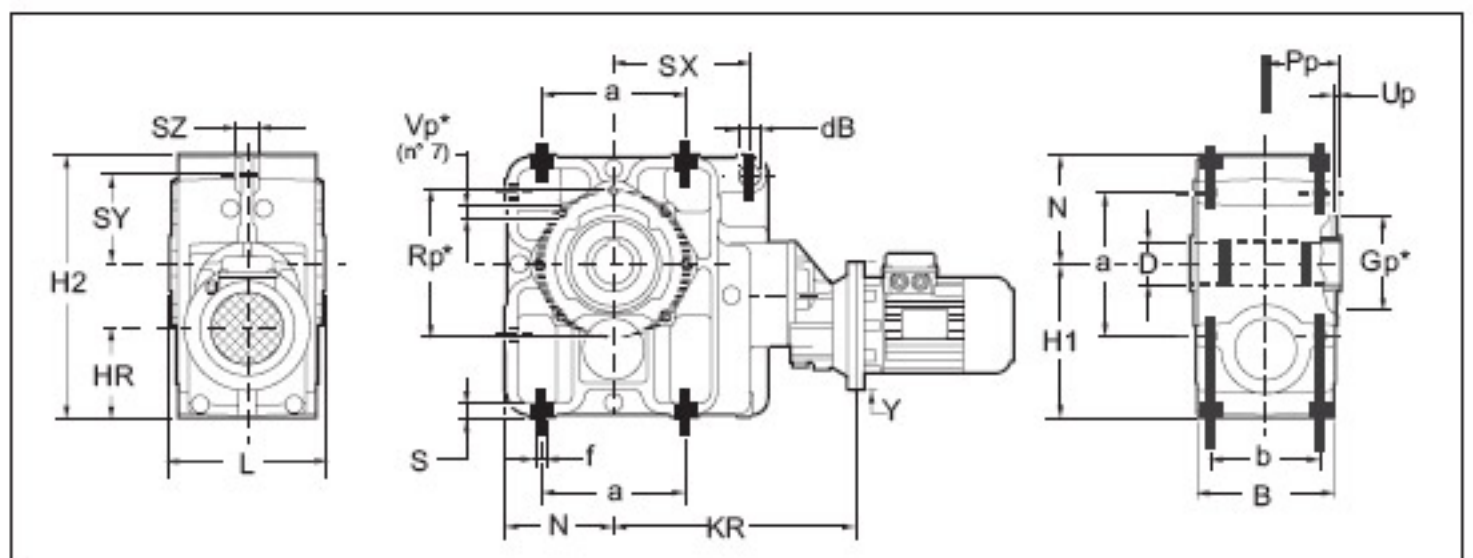
RB3_PAM



RB4_ECE



RB4_PAM



(*) Flanging is foreseen only on the side

6G... Right Angle Gear Motor

RB3	ir	a	b	B	d	D (H7)	dB (H8)	E	f	H1	H2	HL	L	m	M	N	S	SX	SY	SZ	Gp (G6)	Pp	Rp	uP	Vp
125	10...30.6	210	160	200	24 (j6)	60	30	45	18	225	385	180	218	M8	258	160	20	200	130	32	140	105	215	5	M12
	24 (j6)				45			M8																	
	24 (j6)				45			M8																	
140	9.8...30.0	240	180	220	28 (j6)	70	34	50	20	250	430	210	242	M8	287.5	180	22	220	145	36	155	117.5	235	5	M14
	28 (j6)				50			M8																	
	24 (j6)				50			M8																	
160	10...30.6	260	200	250	28 (j6)	80	38	50	22	280	480	220	274	M8	311	200	25	250	160	40	170	132.5	265	5	M16
	28 (j6)				50			M8																	
	24 (j6)				50			M8																	
180	9.7...31.7	300	225	280	45 (k6)	90	45	110	24	315	540	247	302	M10	365	225	28	280	177	50	195	148.5	300	5	M18
	35 (k6)				80			M10																	
	35 (k6)				80			M10																	
200	10.1...31.1	340	250	315	50 (k6)	100	50	110	27	355	605	280	340	M12	395	250	32	315	200	60	215	167.5	350	5	M20
	40 (k6)				110			M10																	
	40 (k6)				110			M10																	

RB3	IEC B5	125		140		160		180		200	
		Y	K	Y	K	Y	K	Y	K	Y	K
		80-90	200	357							
100-112	250	367	250	401.5	250	425					
132	300	387	300	421.5	300	445	300	415	300	443	
160-180	350	417	350	451.5	350	475	350	433	350	461	
200	400	417	400	451.5	400	475	400	433	400	461	
225			450	481.5	450	505	450	463	450	491	
250-280					550	505	550	464	550	492	

RB4	a	b	B	dR	D (H7)	dB (H8)	ER	f	H1	H2	HR	L	mR*	MR	N	SX	SY	SZ	Gp (G6)	Pp	Rp	Up	Vp
125	210	160	200	16 (j6)	60	30	40	18	225	385	132	218	M6	518	160	200	130	32	140	105	215	5	M12
140	240	180	220	19 (j6)	70	34	40	20	250	430	149	242	M6	595	180	220	145	36	155	117.5	235	5	M14
160	260	200	250	19 (j6)	80	38	40	22	280	480	159	274	M6	618	200	250	160	40	170	132.5	265	5	M16
180	300	250	280	32 (k6)	90	45	80	24	315	540	171	302	M8	487	225	280	177	50	195	148.5	300	5	M18
200	340	250	315	32 (k6)	100	50	80	27	355	605	204	340	M8	515	250	315	200	60	215	167.5	350	5	M20

* Profondità utile filetto / Threaded length / Gewindeliefe

RB4	IEC B5	125		140		160		180		200	
		Y	KR	Y	KR	Y	KR	Y	KR	Y	KR
		63	140	489							
71	160	489	160	561	160	584					
80-90	200	509	200	576	200	599	200	463.5	200	490	
100-112	250	519	250	586	250	609	250	478.5	250	506.5	
132			300	610	300	633	300	499.5	300	527.5	
160-180							350	529.5	350	557.5	