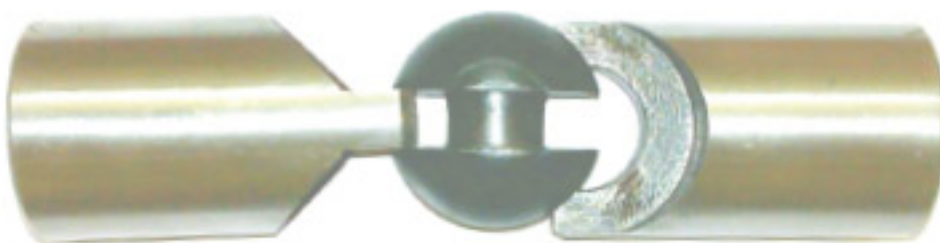
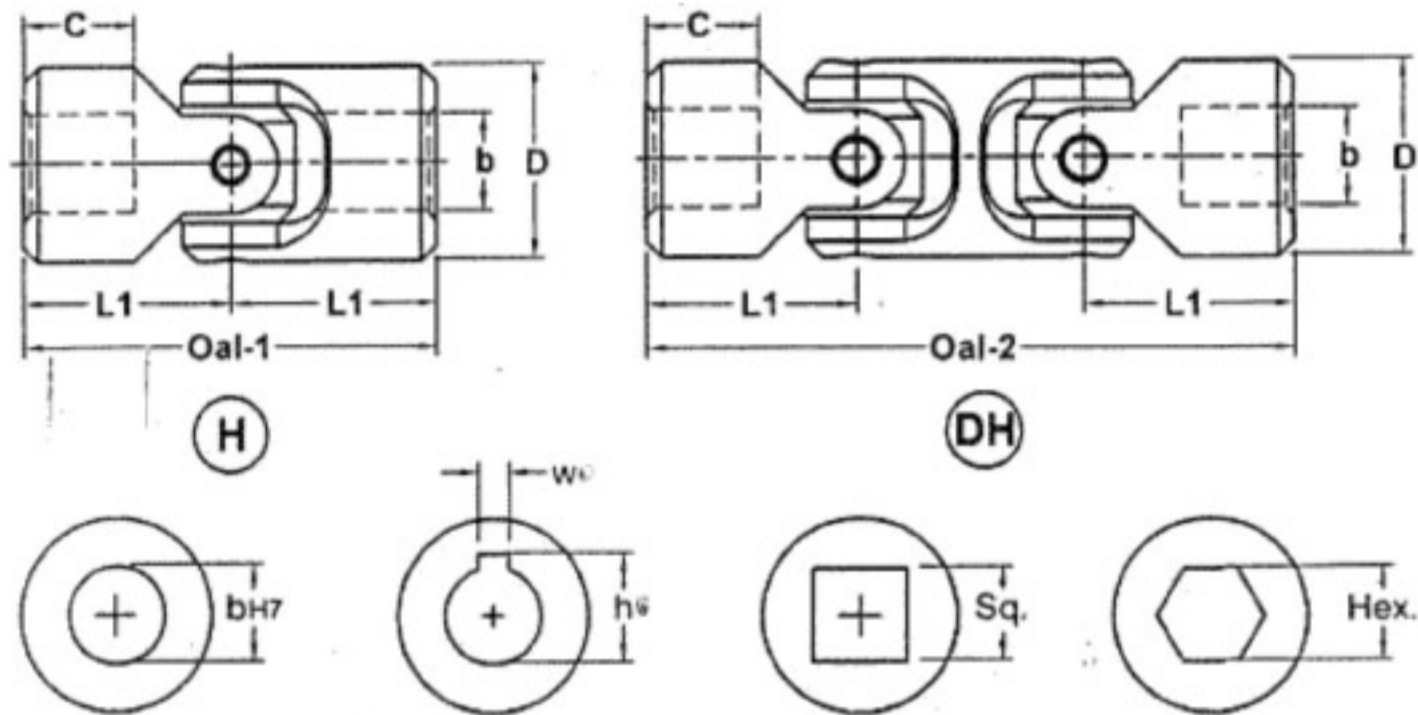


## HOOK & BALL JOINT



**14C**

## 14C... Hook Joint

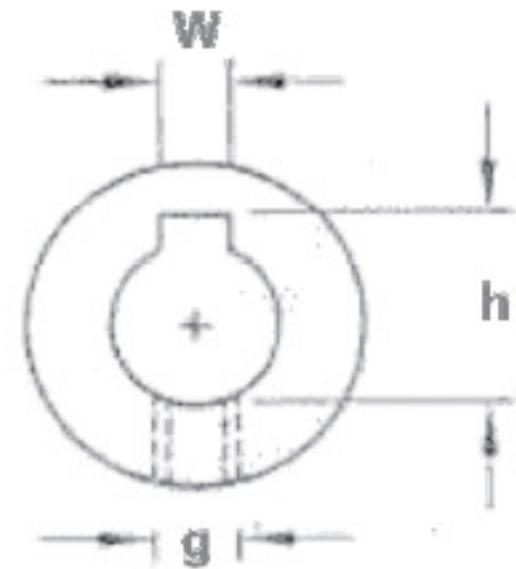
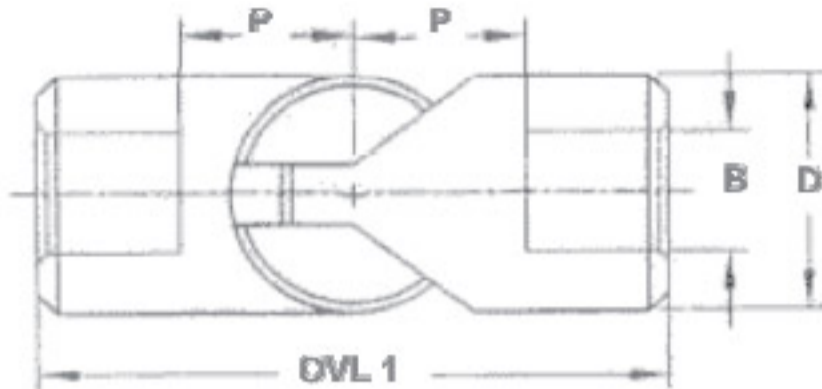


Model		Bore		Dimensions (mm)						
HJ	DHJ	b H-7	D	L1	Oal-1	Oal-2	C	W x h	Sq.	Hex.
HJ1	DHJ1	6	16	17	34	56	8	2 x7	6	6
HJ2	DHJ2	8	16	20	40	62	11	2 x9	8	8
HJ3	DHJ3	10	20	24	48	74	12	3x11.4	10	10
HJ4	DHJ4	12	25	28	56	86	13	4x13.8	12	12
HJ5	DHJ5	14	28	30	60	96	13	5x16.3	14	14
HJ6	DHJ6	16	32	34	68	108	16	5x18.3	16	16
HJ7	DHJ7	18	36	37	74	118	17	6x20.8	18	18
HJ8	DHJ8	20	42	41	82	132	18	6x22.8	20	20
HJ9	DHJ9	22	45	47.5	95	148	22	6x24.8	22	22
HJ10	DHJ10	25	50	54	108	168	26	8x28.3	25	25
HJ11	DHJ11	28	54	58	116	180	29	8x31.3	-	-
HJ12	DHJ12	30	58	61	122	192	29	8x33.3	-	-
HJ13	DHJ13	32	58	65	130	200	33	10x35.3	-	-
HJ14	DHJ14	35	70	70	140	222	35	10x38.3	-	-
HJ15	DHJ15	40	80	80	160	255	40	12x43.3	-	-

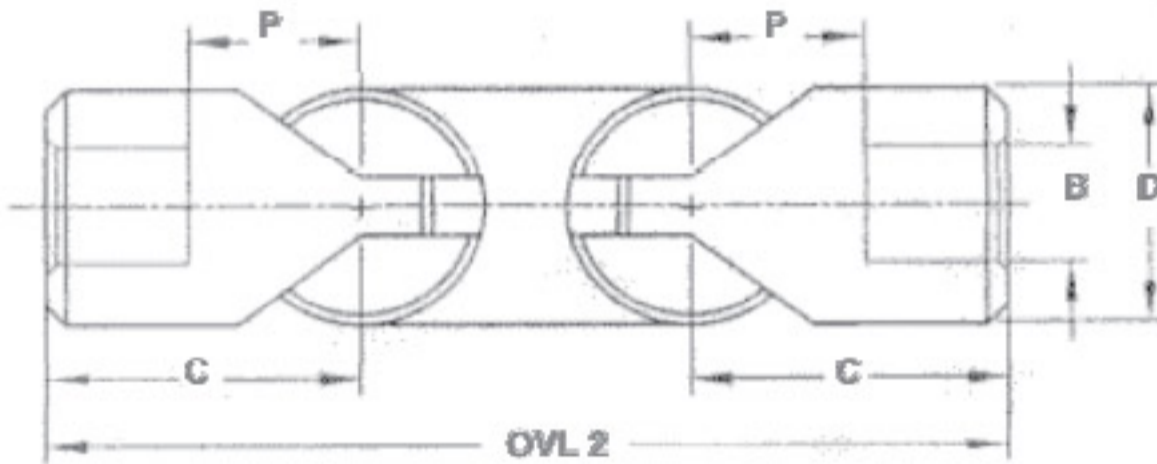
\* Maximum angle 45 Type 'H' and 90 Type 'DH'

# 14C... Hook Joint

## TYPE "BJ"



## TYPE "DBJ"



TYPE		D	Oal-1	Oal-2	BORE		P	C	W x h	g
BJ	DJ				Round	Keyway				
BJ-1	DBJ-1	12	34	54	6	-	10	18		20mm/pin
BJ-2	DBJ-2	16	40	70	8	-	13	23		30mm/pin
BJ-3	DBJ-3	16	46	70	10	10	13	23	3X11	M4
BJ-4	DBJ-4	20	56	84	12	12	14	28	4x13.5	M5
BJ-5	DBJ-5	26	60	90	14	14	16	30	5x15.5	M6
BJ-6	DBJ-6	28	70	105	16	16	19	35	5x17.5	M6
BJ-7	DBJ-7	30	78	117	18	18	21	39	5x20.0	M6
BJ-8	DBJ-8	32	86	130	20	20	23	43	5x22.0	M6
BJ-9	DBJ-9	34	90	135	22	22	25	45	6x24.0	M6
BJ-10	DBJ-10	38	100	150	25	25	28	50	6x27.5	M8
BJ-11	DBJ-11	43	116	174	28	28	33	58	8x30.5	M8
BJ-12	DBJ-12	48	123	189	30	30	33	63	10x32.5	M10
BJ-13	DBJ-13	51	134	201	32	32	37	63	10x34.5	M10
BJ-14	DBJ-14	53	144	216	35	35	37	72	10x38.0	M10
BJ-15	DBJ-15	58	150	225	40	40	40	75	10x43.0	M10

\*Maximum operating angle 30° Type "BJ" and 60° Type "DBJ"

All dimensions are in mm unless otherwise specified, In view of our constant endeavor to improve the quality of our products, we reserve the right to alter or change specifications without prior notice.