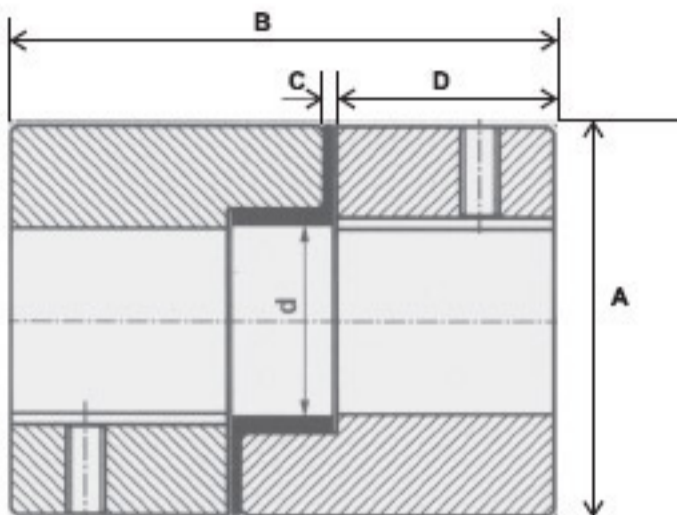


ENCODER JAW COUPLING

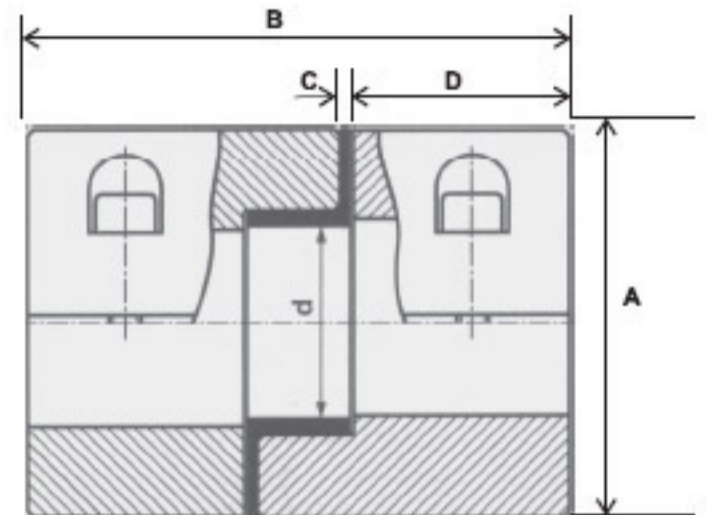


19C

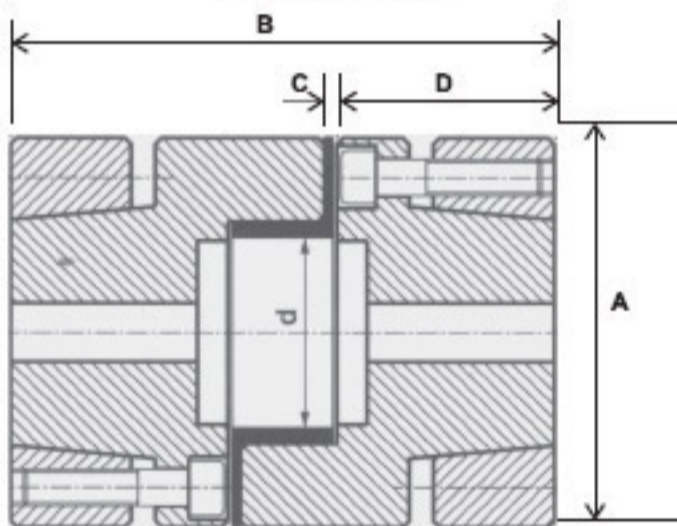
19C... Encoder Jaw Coupling



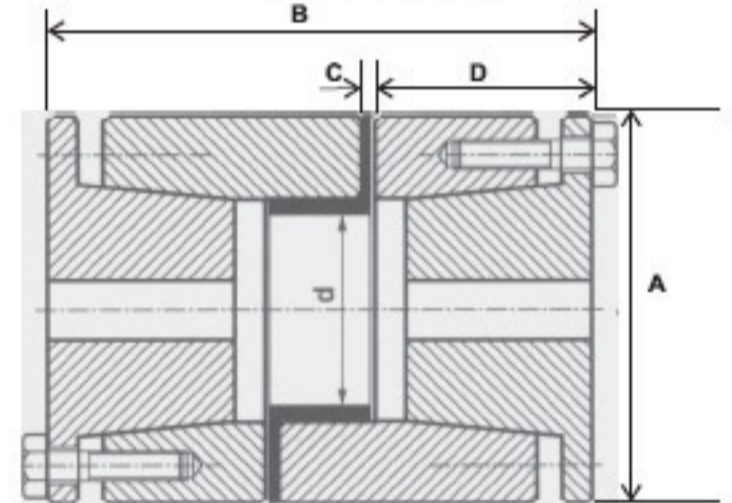
Model : BKE



Model : SCE



Model : SDE



Model : KFE

Model :
 BKE = Coupling with Bore Keyway & set screws
 SCE = Coupling with Split Clamping Hubs
 SDE = Coupling with Shrink Discs
 KFE = Coupling with Kwikfix conical bushings

Size	Nominal Torque (Nm)				Max. Speed (rpm)		Bore (mm)		Dimensions (mm)					Mass per Hub at max. bore (kg)			Moment of Inertia per Hub at max. bore ($\times 10^{-6} \text{ kgm}^2$)			Screw Tightening Torque (Nm)	
	Yellow (80 A)	Red (90 A)	Blue (95 A)	Green (50 D)	BKE SCE	SDE KFE	Min.	Max.	A	D	C	B	d	BKE SCE	SDE	KFE	BKE SCE	SDE	KFE	SCE	SDE KFE
65-12	4	6	8	-	12000	15000	6	12	27	19	1	50	-	0.026	-	-	3	-	-	1.5	-
85-16	8	12	16	-	10000	14000	10	16	36	26.5	2	66	-	0.066	-	-	13	-	-	4	-
91-22	-	15	22	30	9000	13000	10	22	44.5	26.5	2	66	-	0.093	0.133	0.229	29	42	70	10	1.5
101-30	-	40	60	70	7000	12000	10	30	54	32.5	2	78	20	0.130	0.211	0.367	65	102	177	10	6
105-36	-	90	150	180	6000	10000	10	36	65	36	2	90	25	0.250	0.414	0.944	173	293	601	25	10
115-45	-	165	280	330	5000	8500	15	45	85	46	3	114	30	0.574	0.936	1.432	666	1106	1669	25	10
120-50	-	225	300	450	4000	7000	20	50	96	50	3	125	30	2.134	1.830	1.973	2781	2676	2921	50	25
160-60	-	300	400	600	3600	5000	20	60	115	57	3	139	40	3.492	3.006	3.206	7375	6290	6789	120	70
175-65	-	400	550	750	3600	5000	20	65	127	65	3	155	47	4.835	4.182	4.467	12360	11000	11460	120	70

Model BKE / SCE sizes 120-50 to 175-60 only in steel.

Model KFE Standard coupling hubs in CI with Kwikfix bushings in steel. Complete couplings in steel also available on request.

Model SDE sizes 91-22 to 115-45 hubs in aluminium alloy and shrink discs in steel. Sizes 120-50 to 175-60 complete couplings in steel.

All dimensions are in mm unless otherwise specified. In view of our constant endeavor to improve the quality of our products, we reserve the right to alter or change specifications without prior notice.